

Matt in 1,2, 3, ? Zügen

führt den fortgeschrittenen Anfänger behutsam ein weiteres Stück vorwärts. Zum "Aufwärmen" werden einige Aufgaben mit Matt in einem Zug gelöst, dann geht es weiter mit Zweizügern und schließlich mit Dreizügern. Der Schwierigkeitsgrad ist damit schon beträchtlich angestiegen.

Vom einfachen Finden eines Schachgebotes, das zugleich Matt ist ("Lasse nie ein Schach aus, es könnte Matt sein!" ☺) beim Einzüger gilt es bei einem dreizügigen Matt schon weitaus mehr in der Stellung zu erkennen.. Doch in der Praxis sagt uns niemand, dass ein Matt in x Zügen möglich ist. Daher ist der nächste logische und praxisorientierte Schritt für den Beginner, von dieser Krücke der Vorgabe loszukommen. Dies wird hier mit weiteren Übungen angesteuert. Dem Leser wird zunächst gesagt, dass ein Matt für Weiß oder Schwarz möglich ist, aber nicht, in wie vielen Zügen es erfolgen kann. Oft sind hierbei auch mehrere Mattmöglichkeiten gegeben, etwa in zwei und drei Zügen, was dem Leser zugleich einen kleinen Einblick in die Vielfalt der Möglichkeiten des Schachspiels gibt.

Als letzte Übung werden dem Leser Stellungen vorgelegt, ohne dass ihm gesagt wird, wer am Zug ist. So kann es also Mattwege für Weiß, Schwarz, oder auch für beide geben. Das macht das Raten und "Herumstochern" in einer Stellung, bis sich ein Matt ergibt, schon fast unmöglich und der Leser muss sich weitaus mehr als üblich in die Position vertiefen, um Drohungen und Möglichkeiten herauszufinden. So führt diese Übung schon zu einem Einstieg in die Stellungsanalyse, was in den weiteren Bänden noch vertieft wird.

Außer diesem Heranführen an die Stellungsbeurteilung und – Beurteilung lernt der Leser natürlich auch viele kombinatorische Techniken kennen, die er für sein eigenes Spiel gut gebrauchen kann, ja kennen muss. Zum Abschluss ein guter Rat:

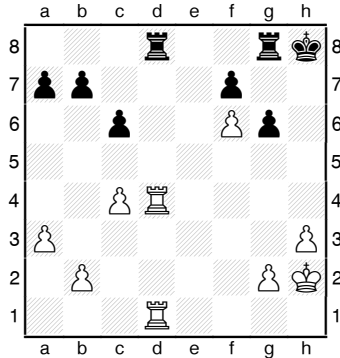
Viele Beginner hören bald – viel zu früh – mit dem Taktiktraining auf. Doch es braucht lange, bis die Bilder und Motive sich im Kopf festgesetzt haben und auch unter Wettkampfstress zugreifbar sind.

Taktiktraining sollte daher intensiv und lange betrieben werden, es ist der beste Weg zu schachlicher Fitness!

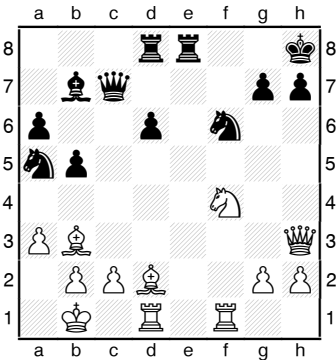
Matt in 1 Zug

Die Lösung ist natürlich immer ein Schachgebot, aber in einigen Fällen ist mehr als nur ein Lösungszug möglich – und du solltest sie alle finden!

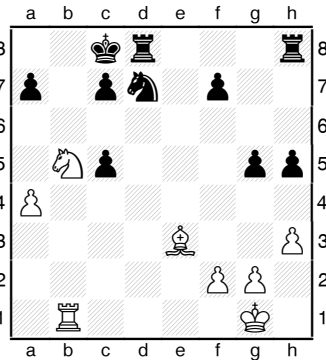
In allen Aufgaben ist
Weiß am Zug



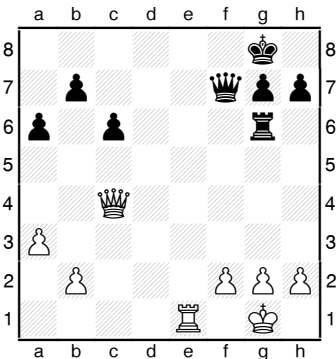
1



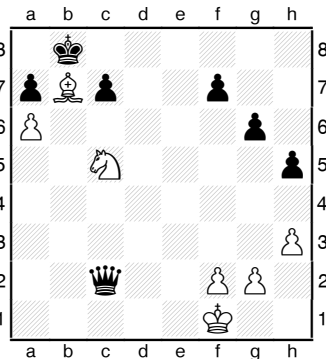
2



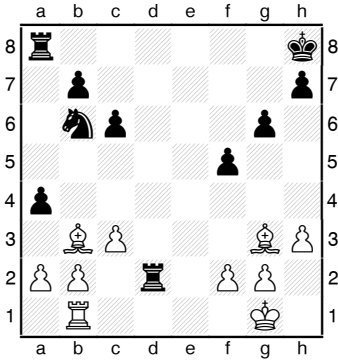
3



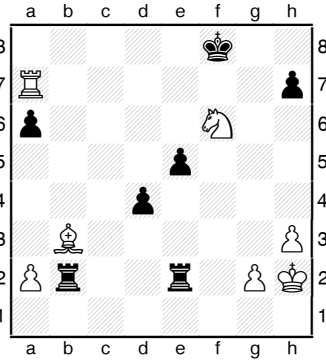
4



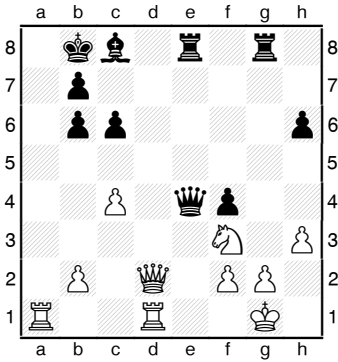
5



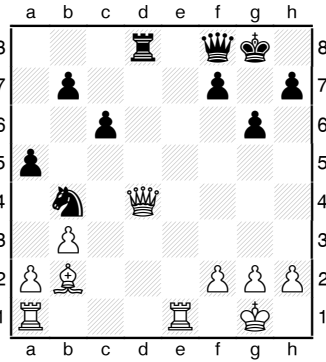
6



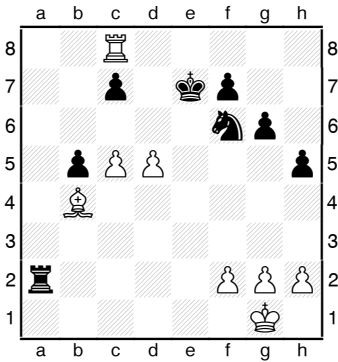
7



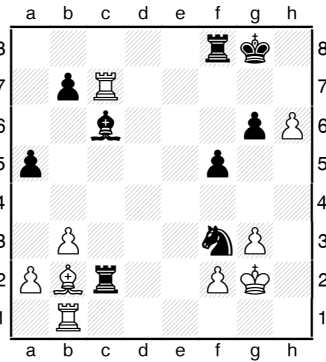
8



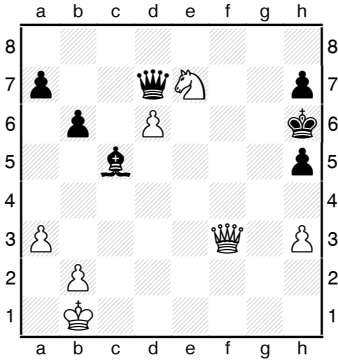
9



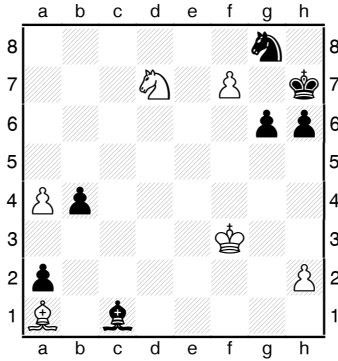
10



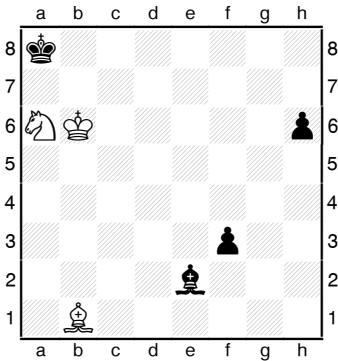
11



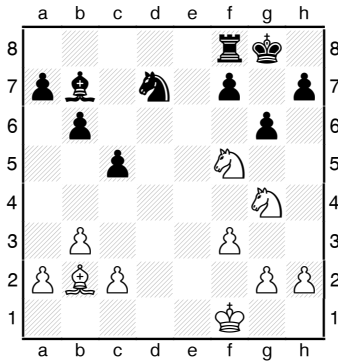
12



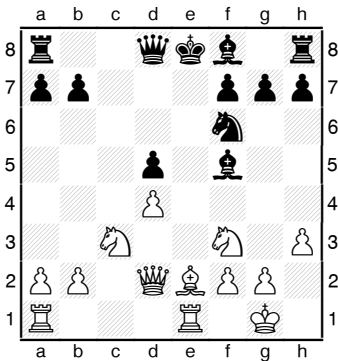
13



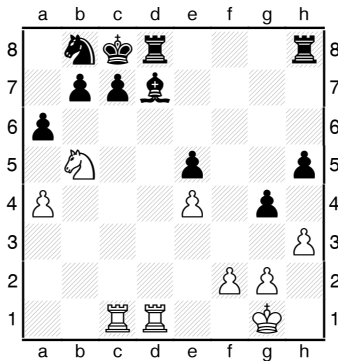
14



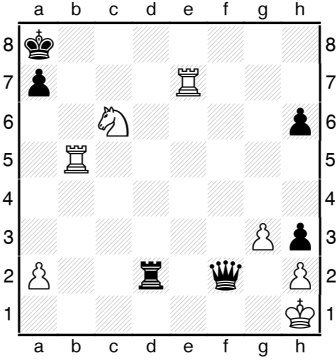
15



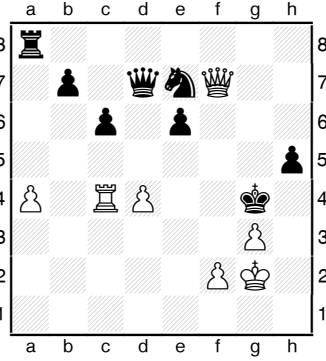
16



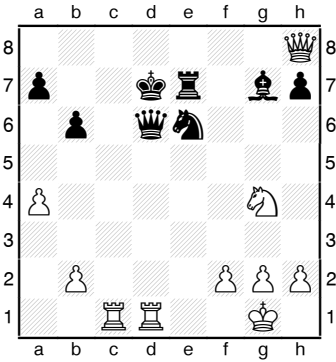
17



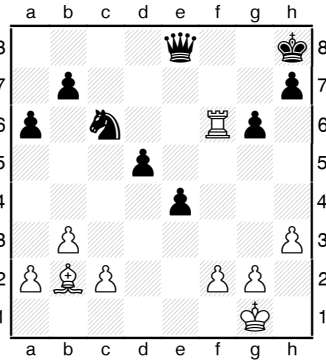
18



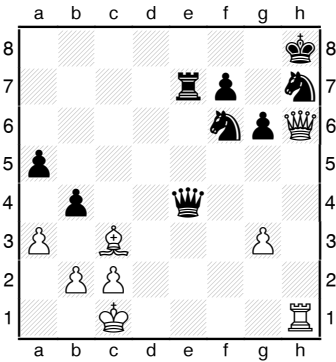
19



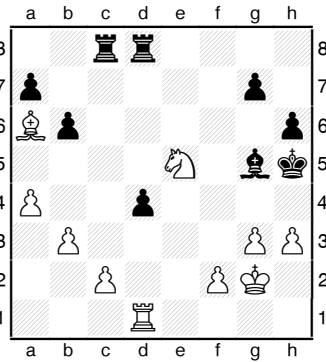
20



21



22

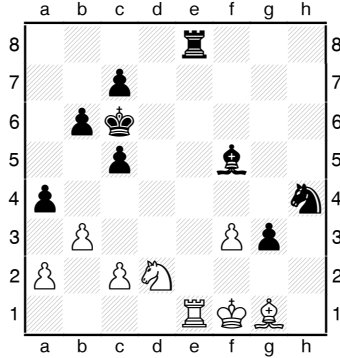


23

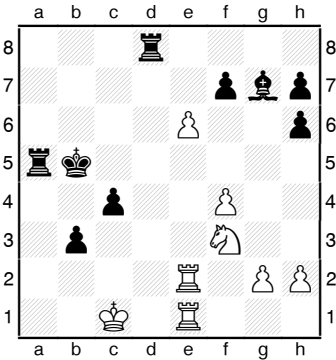
Matt in 1 Zug



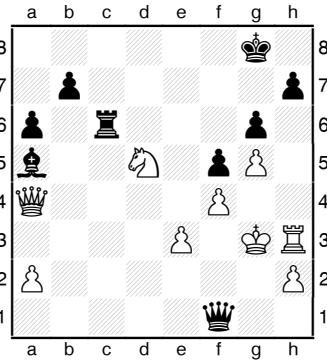
In allen Aufgaben ist
Schwarz am Zug



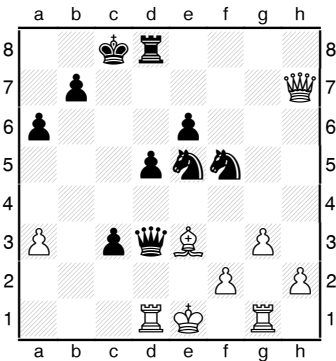
24



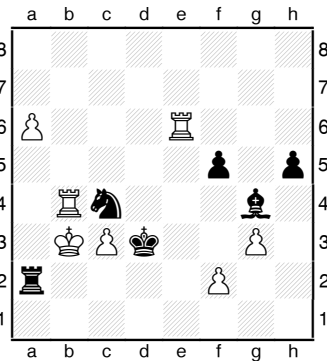
25



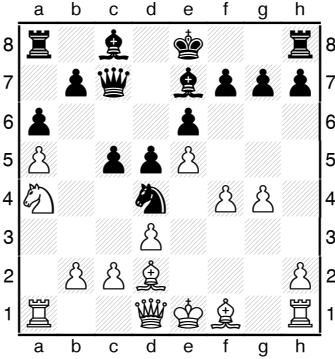
26



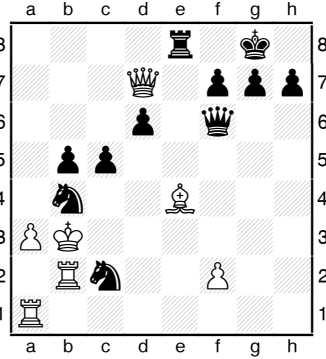
27



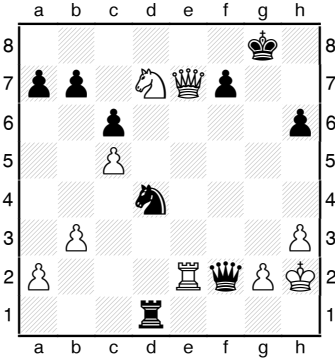
28



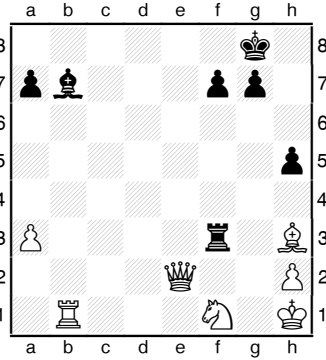
29



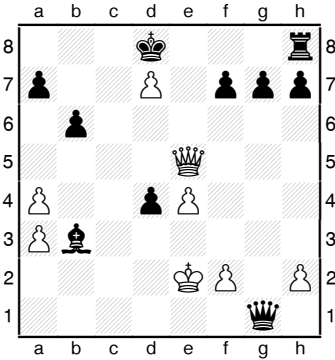
30



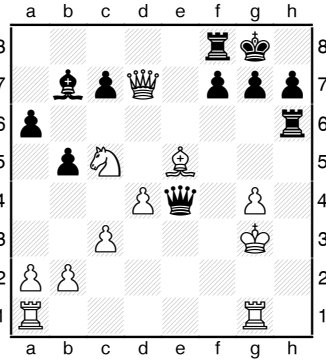
31



32



33

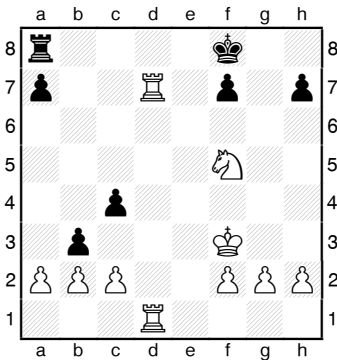


34

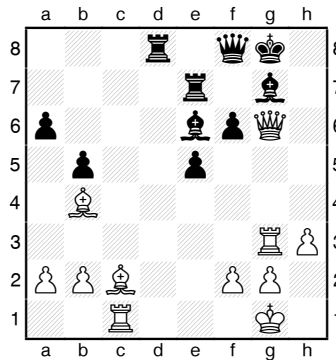
Matt in 2 Zügen

Nun wird es schon schwerer, denn die Lösung muss, anders als vorhin beim Matt in einem Zug, ja nicht unbedingt mit einem Schach beginnen. Wir müssen uns also die Stellung anschauen und uns überlegen, wie ein Matt aussehen könnte. Wenn wir ein Mattbild gefunden haben, ist es meistens nicht schwer, auch den Weg dahin zu finden. Aufgepasst, manchmal gibt es auch mehrere Mattwege!

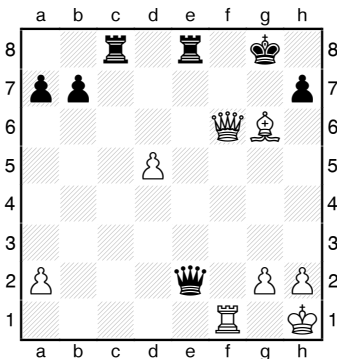
In allen Aufgaben ist **Weiß** am Zug



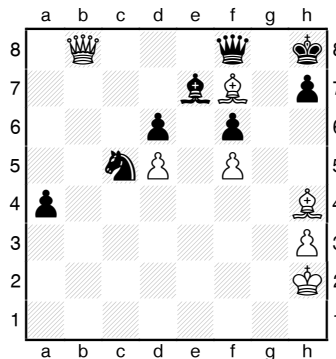
35



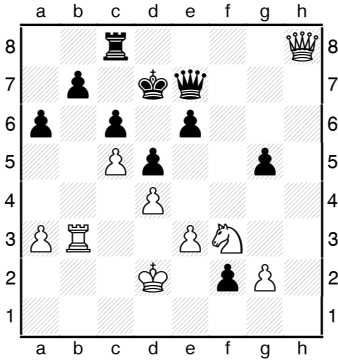
36



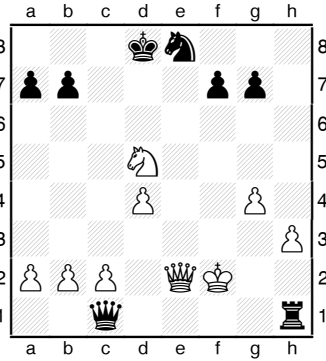
37



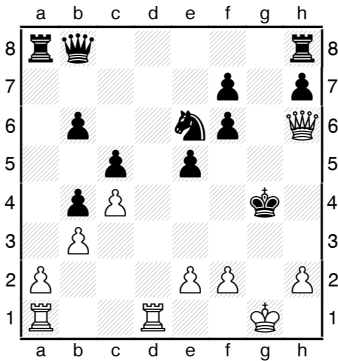
38



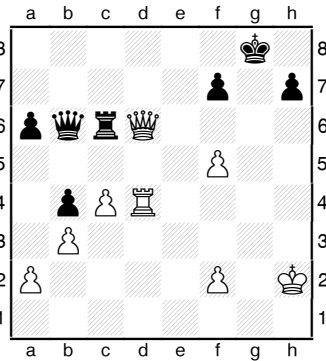
39



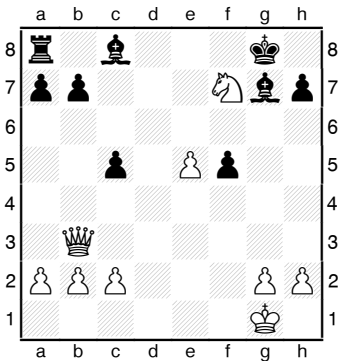
40



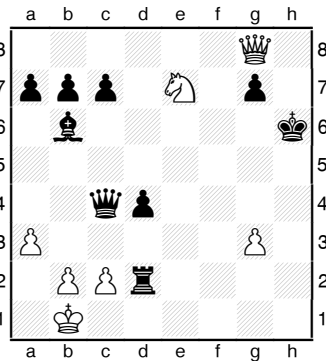
41



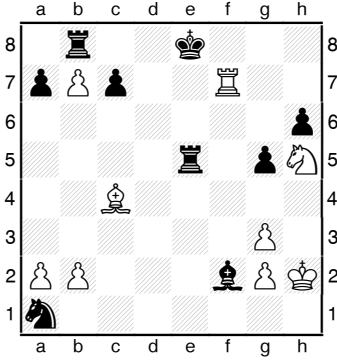
42



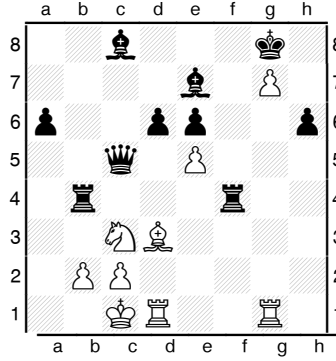
43



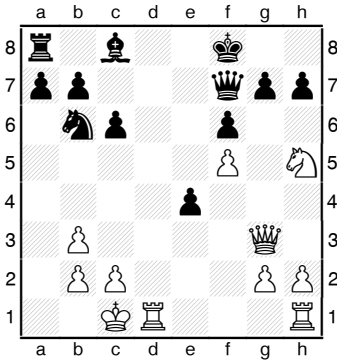
44



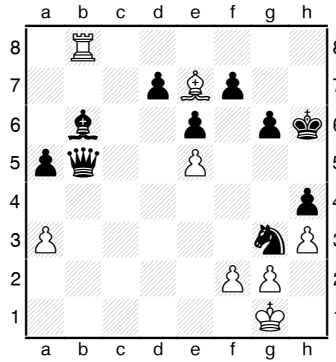
45



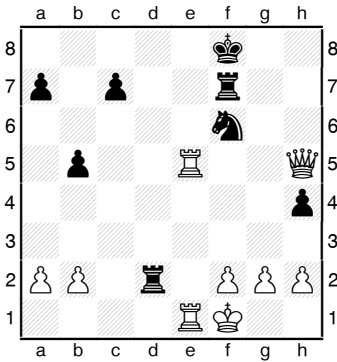
46



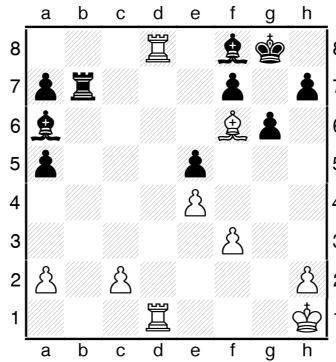
47



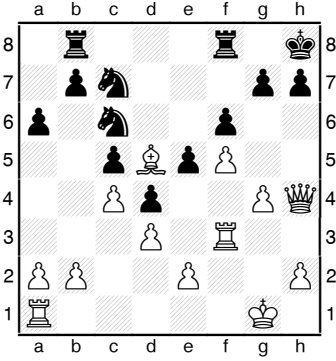
48



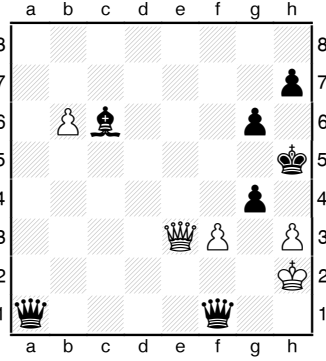
49



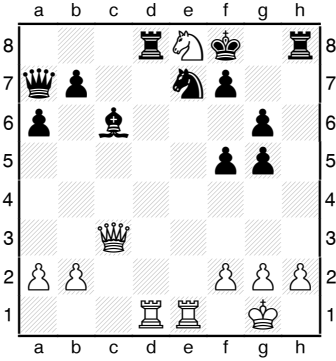
50



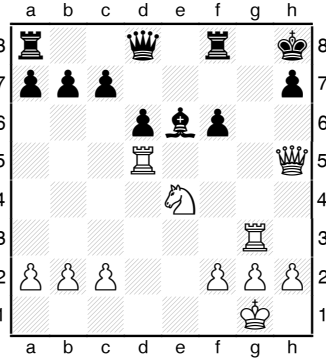
57



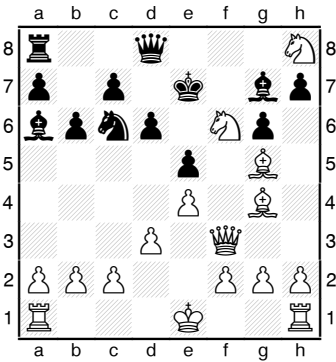
58



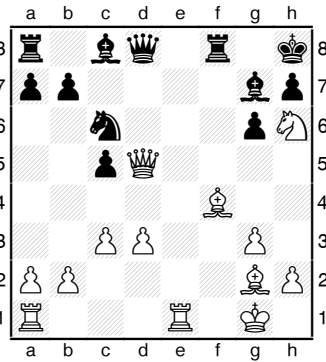
59



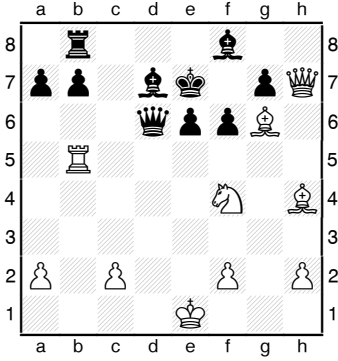
60



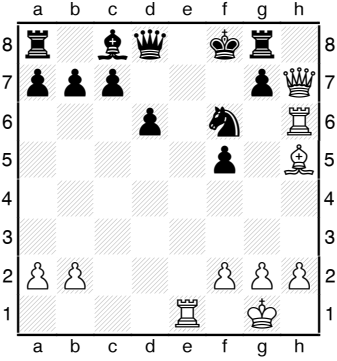
61



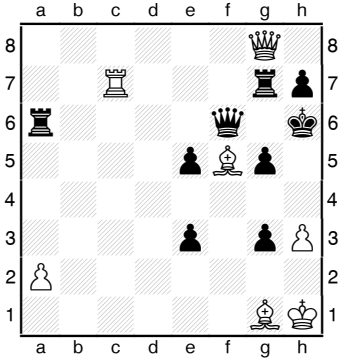
62



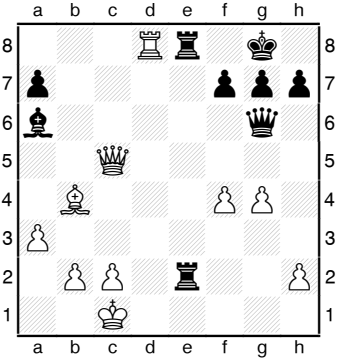
63



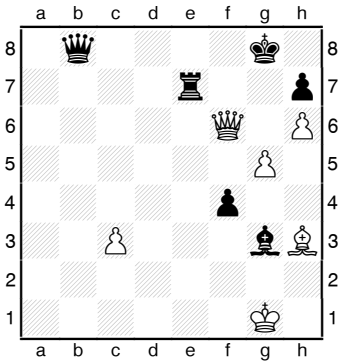
64



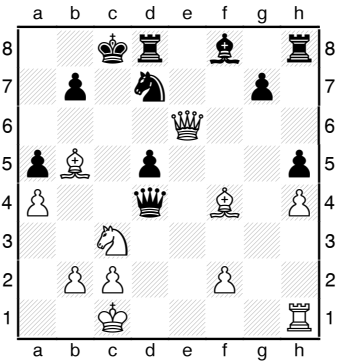
65



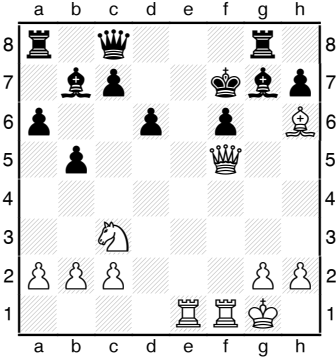
66



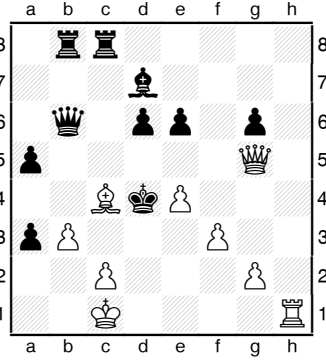
67



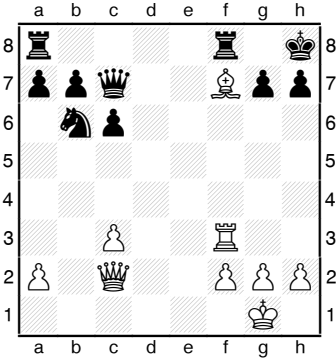
68



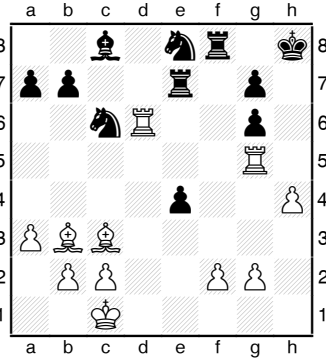
69



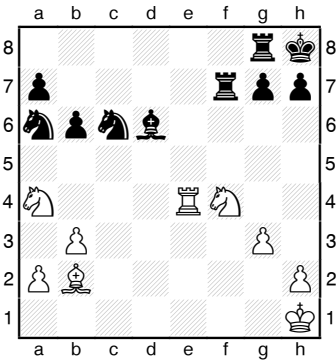
70



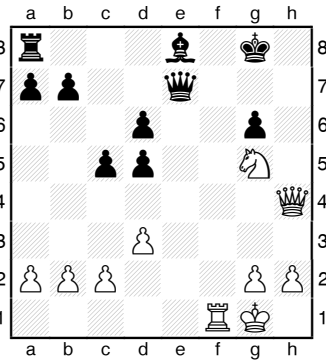
71



72



73

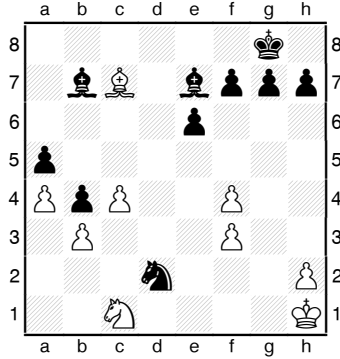


74

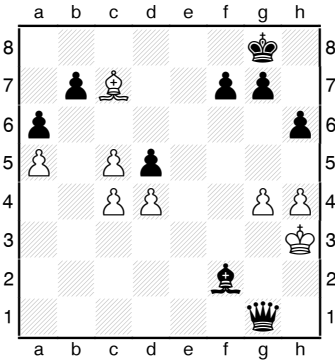
Matt in 2 Zügen



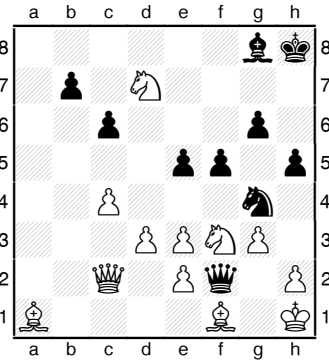
In allen Aufgaben ist
Schwarz am Zug



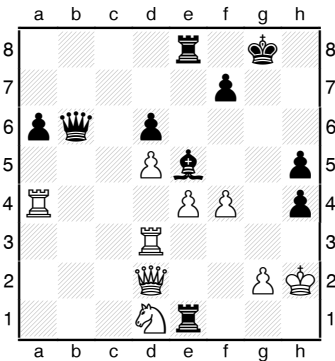
75



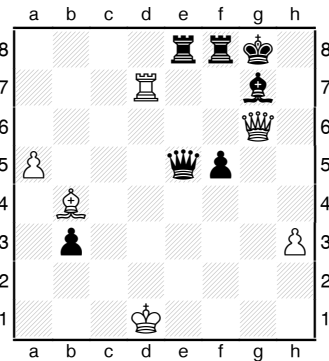
76



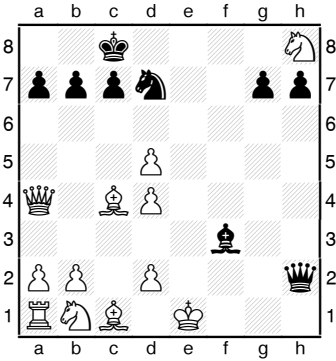
77



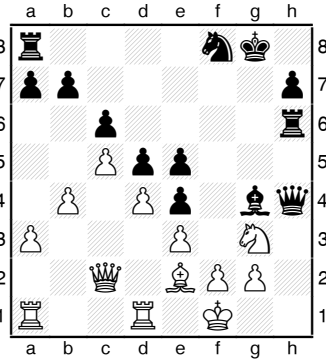
78



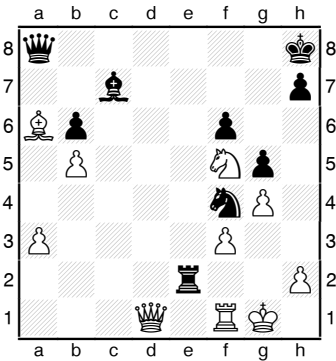
79



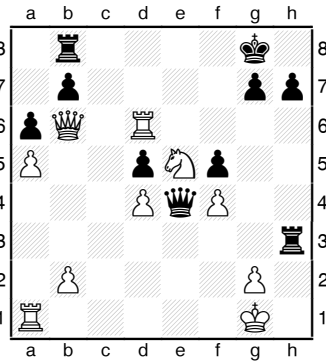
80



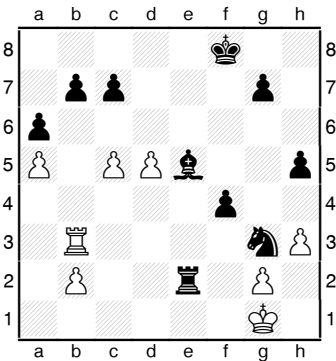
81



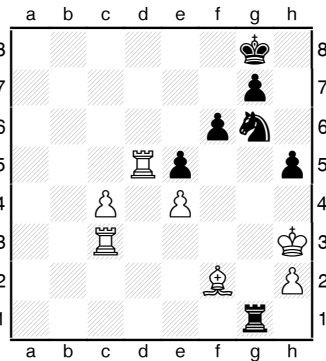
82



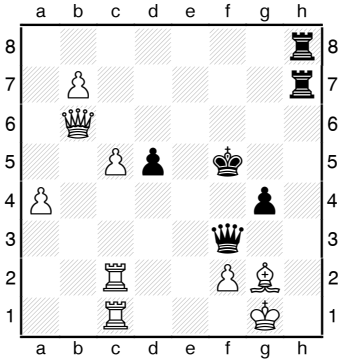
83



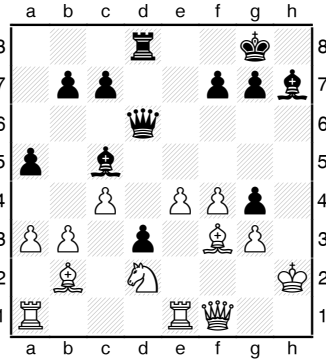
84



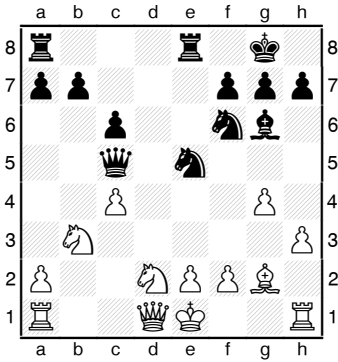
85



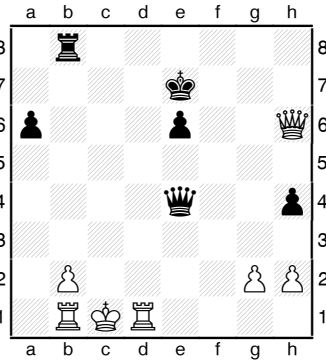
86



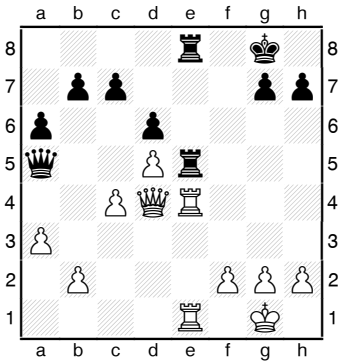
87



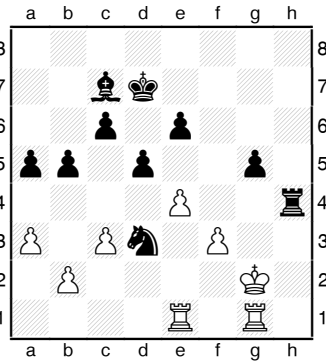
88



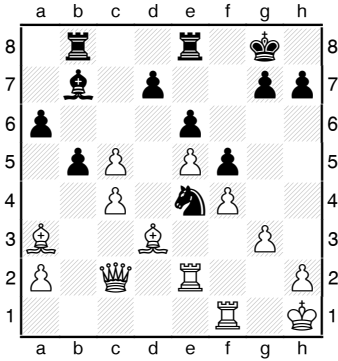
89



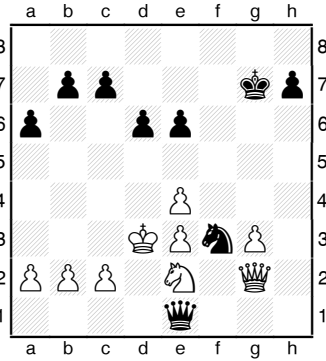
90



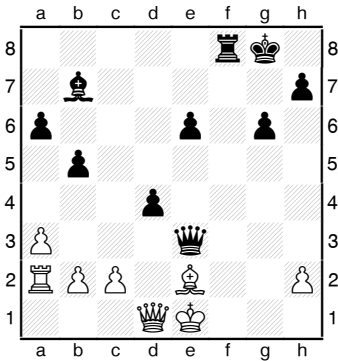
91



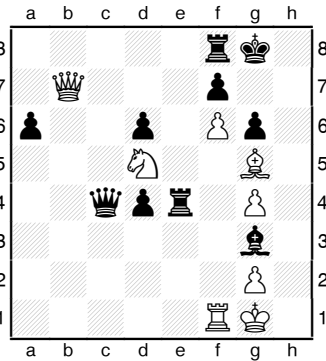
92



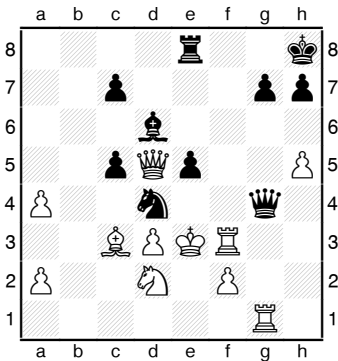
93



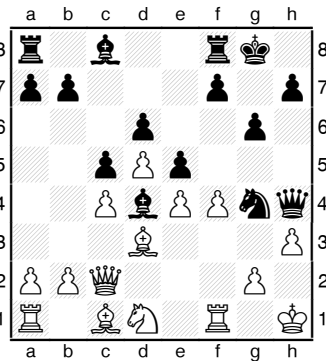
94



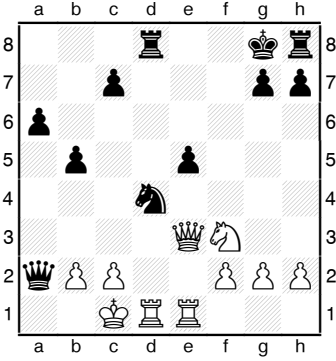
95



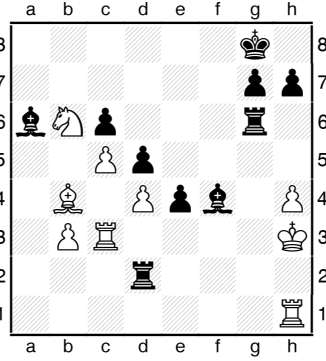
96



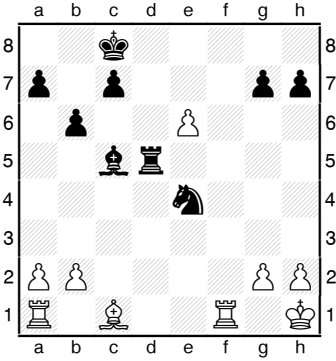
97



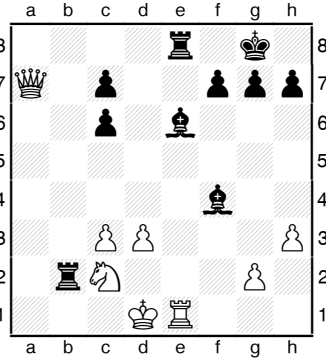
98



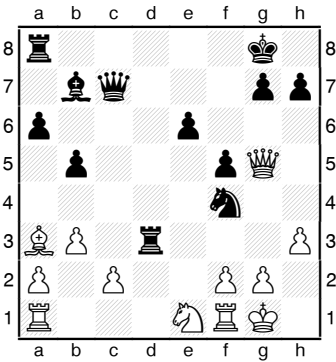
99



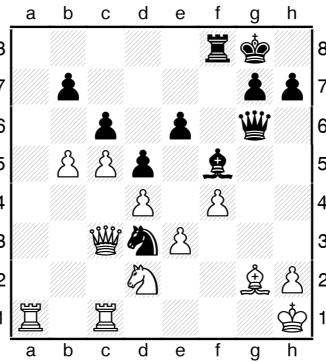
100



101



102

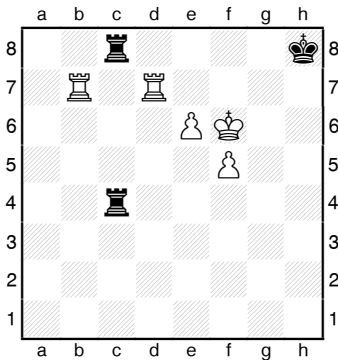


103

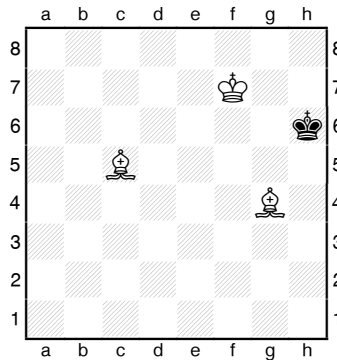
Matt in 3 Zügen

wieder wird es ein Stück schwerer, denn mit jedem weiteren Zug ergeben sich für beide Seite auch mehr Möglichkeiten. Zudem ist es etwas schwerer, sich die angestrebte Mattstellung vorzustellen. Aber keine Bange, mit etwas Nachdenken und Konzentration kann man auch viele dieser Aufgaben lösen. Und nicht verzagen, wenn die Lösung einmal nicht gelingt. Kaum jemand sieht und löst alles!

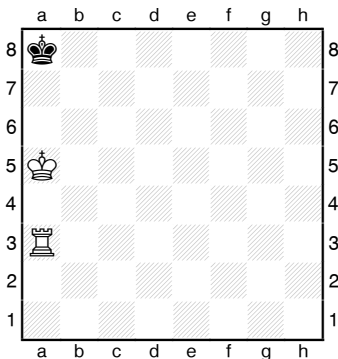
In allen Aufgaben ist **Weiß** am Zug



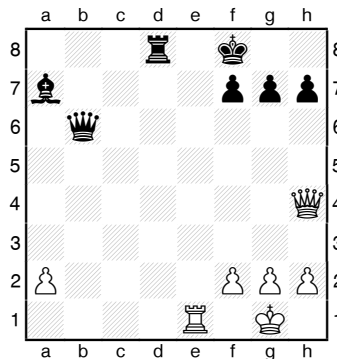
104



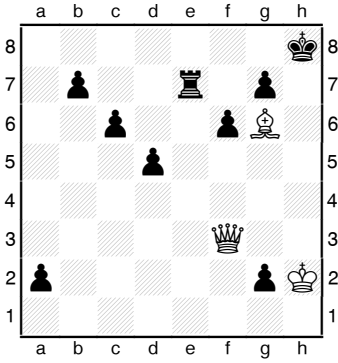
105



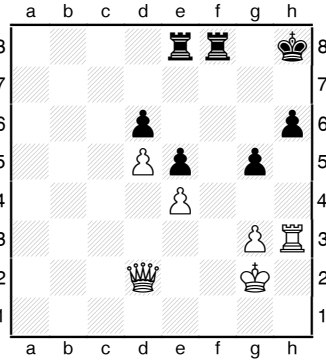
106



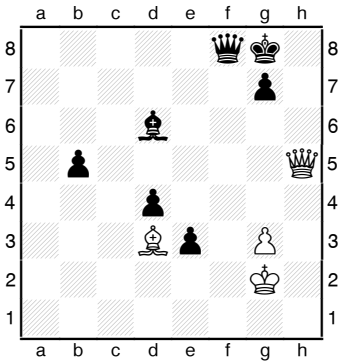
107



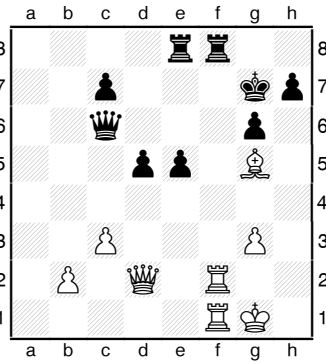
108



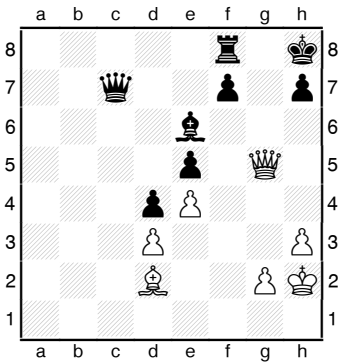
109



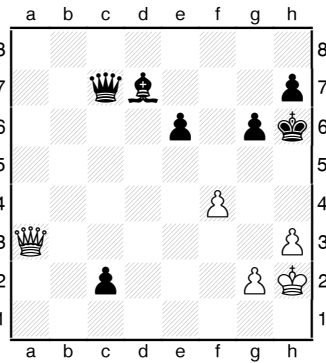
110



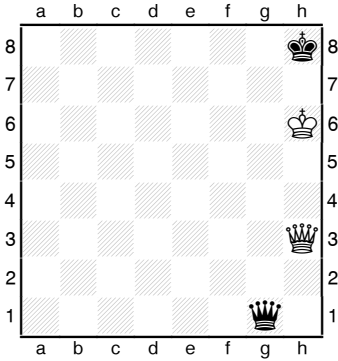
111



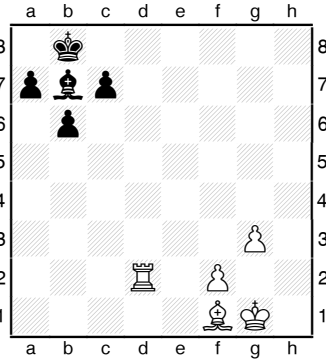
112



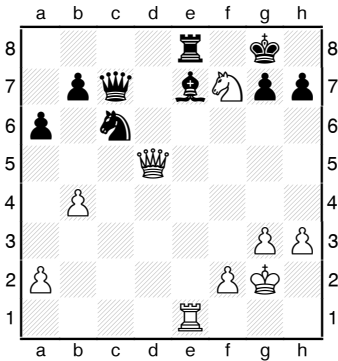
113



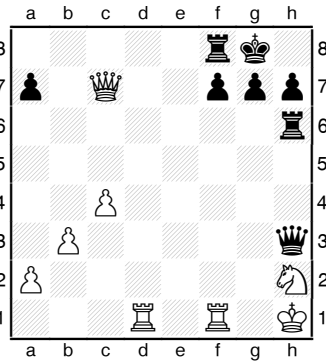
114



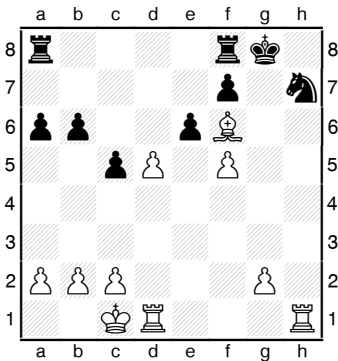
115



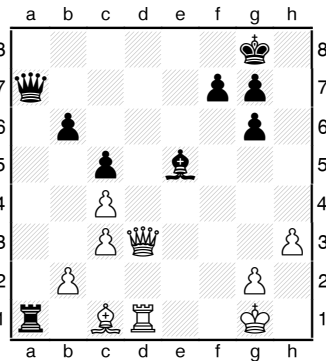
116



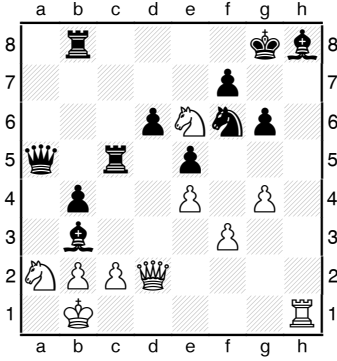
117



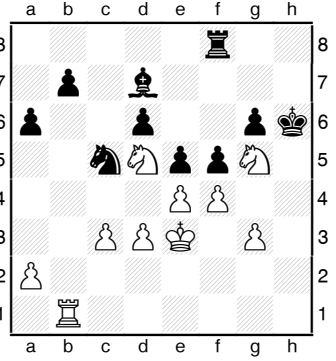
118



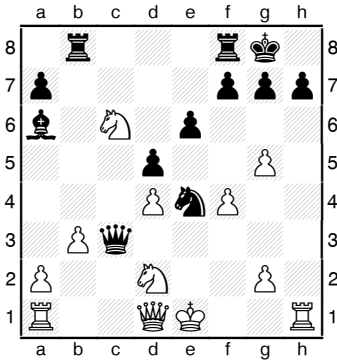
119



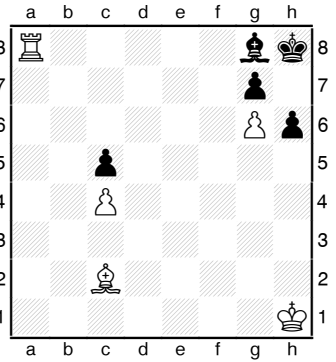
120



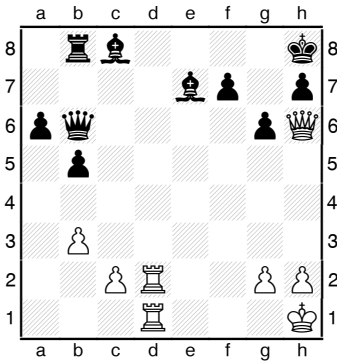
121



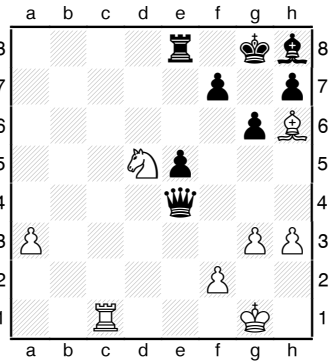
122



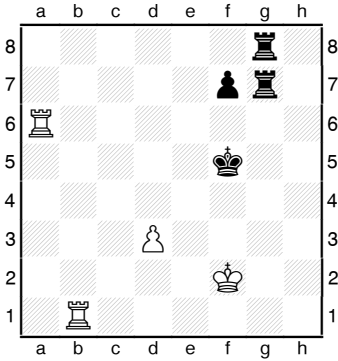
123



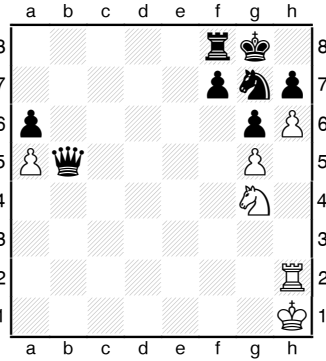
124



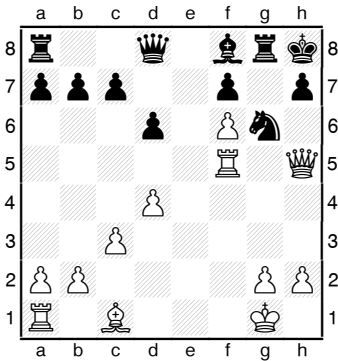
125



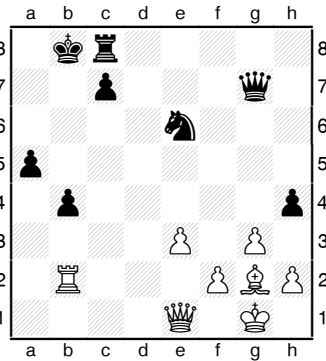
126



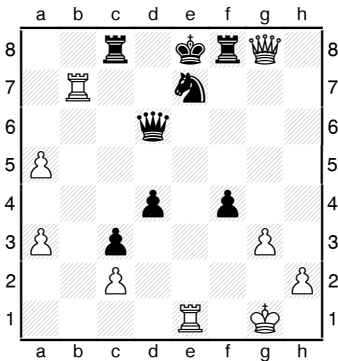
127



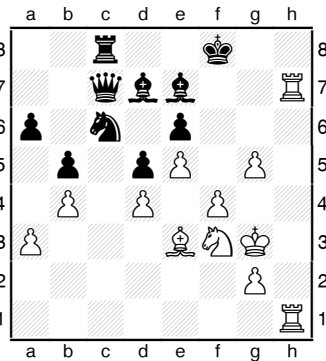
128



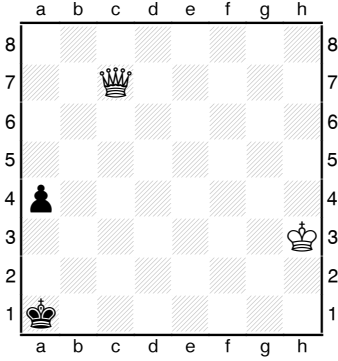
129



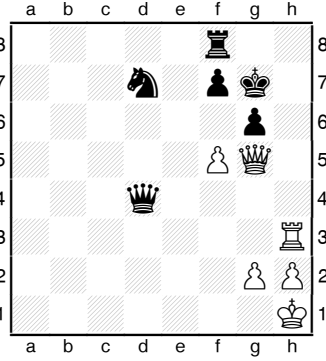
130



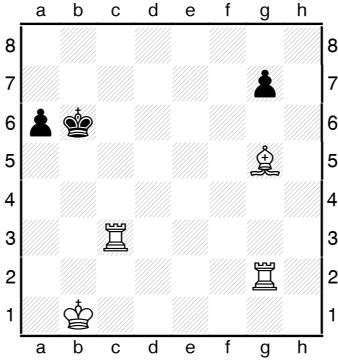
131



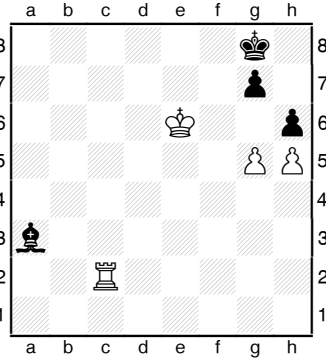
132



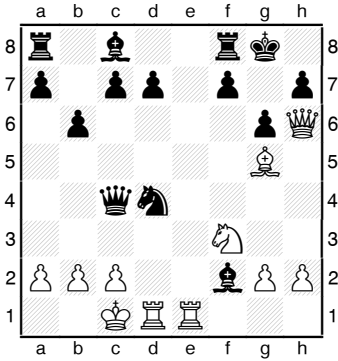
133



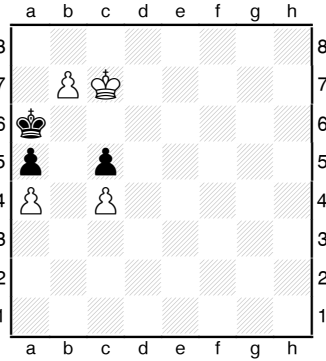
134



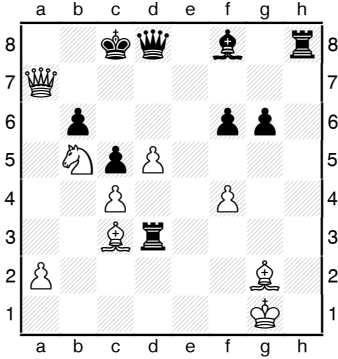
135



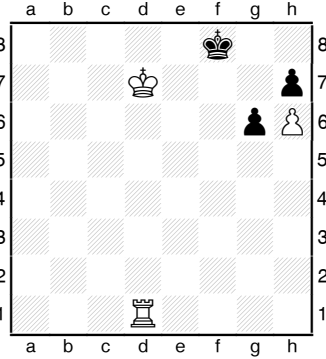
136



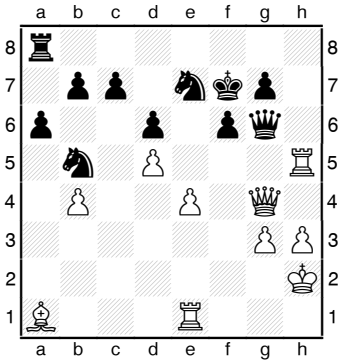
137



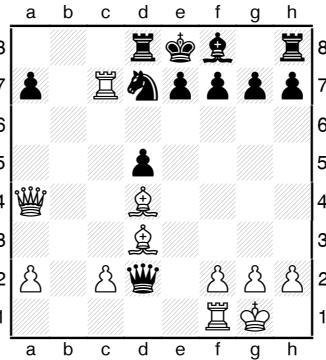
138



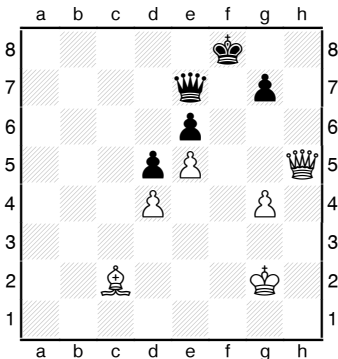
139



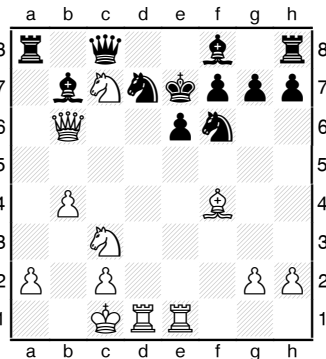
140



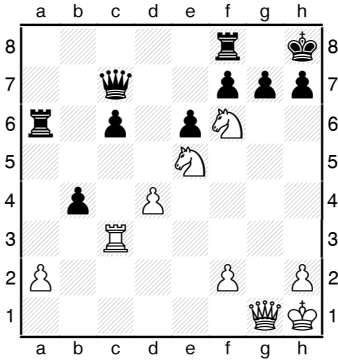
141



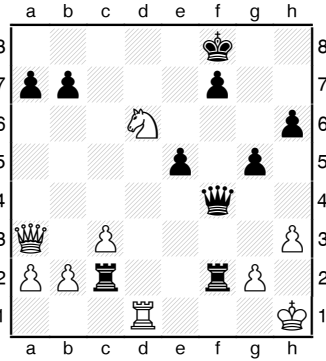
142



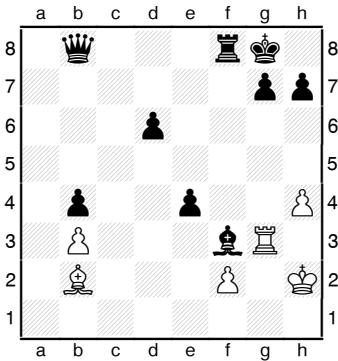
143



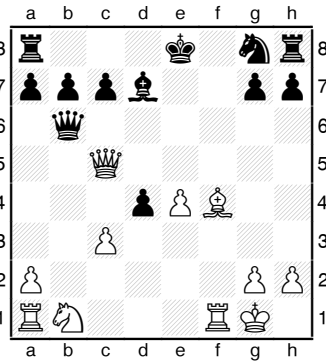
144



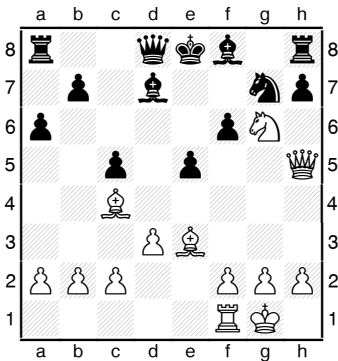
145



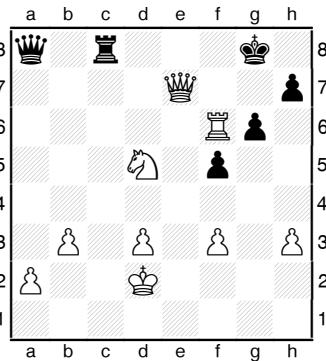
146



147



148

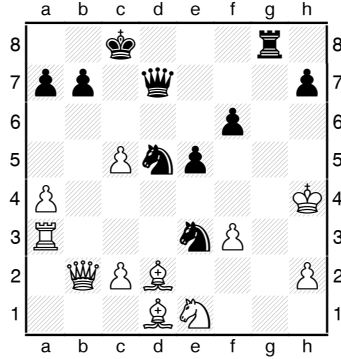


149

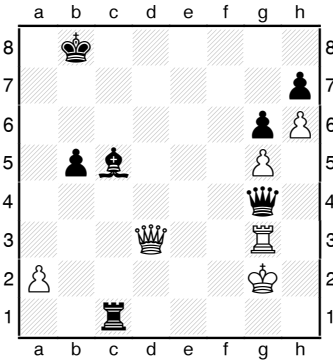
**Matt
in 3 Zügen**



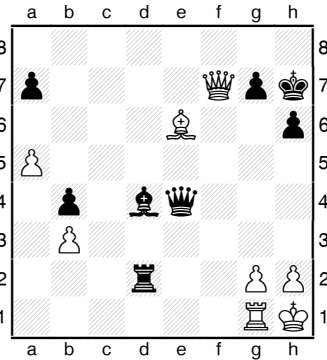
In allen Aufgaben ist
Schwarz am Zug



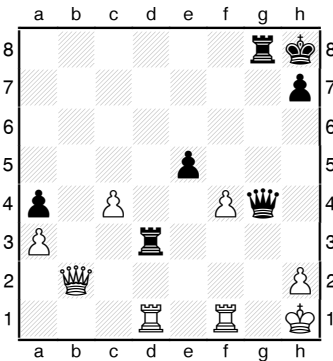
150



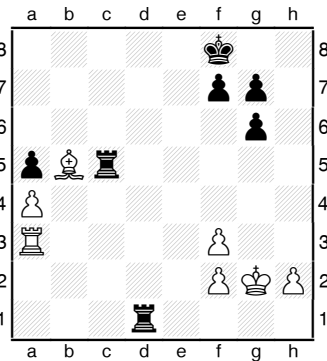
151



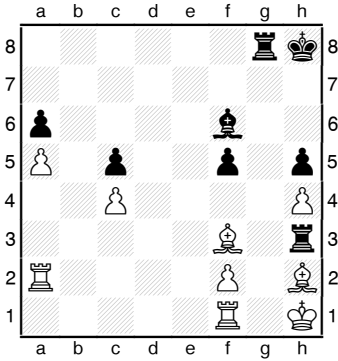
152



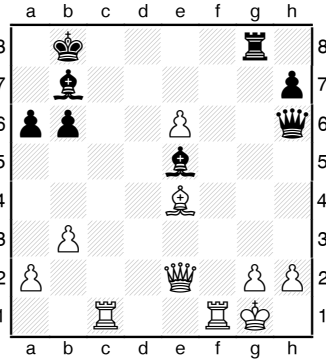
153



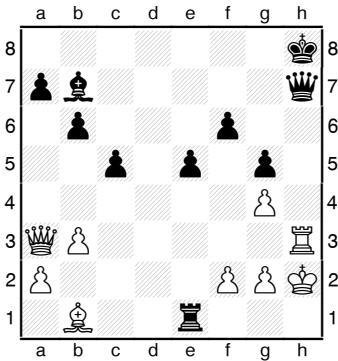
154



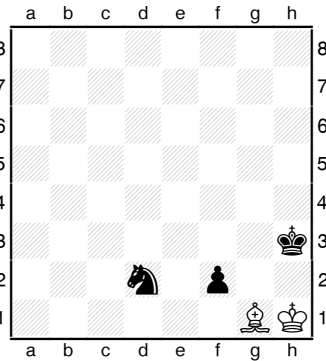
155



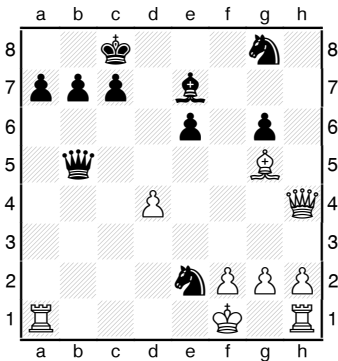
156



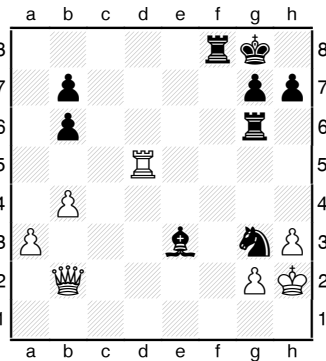
157



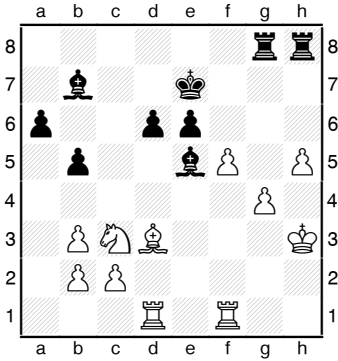
158



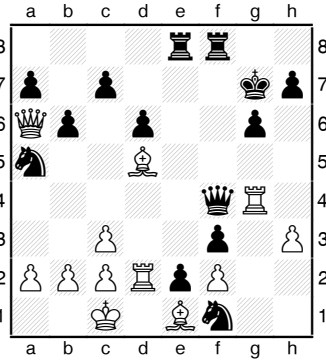
159



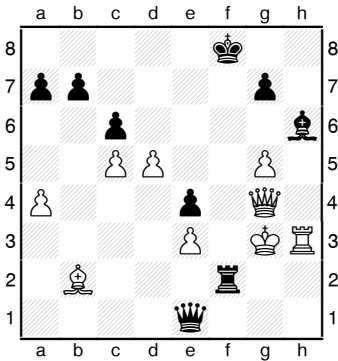
160



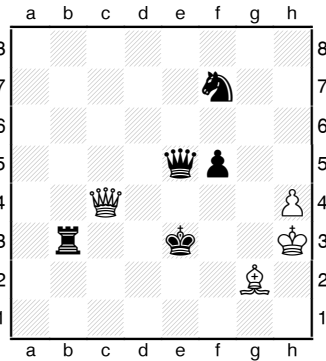
161



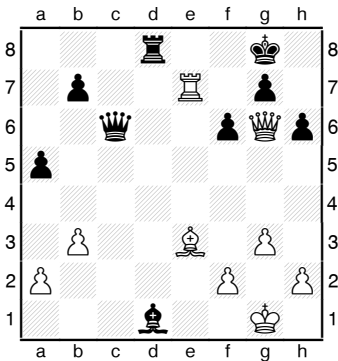
162



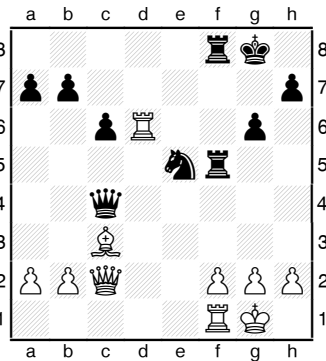
163



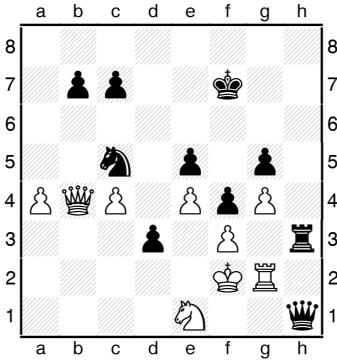
164



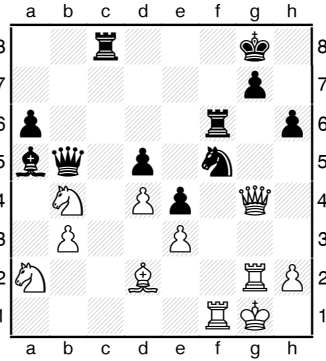
165



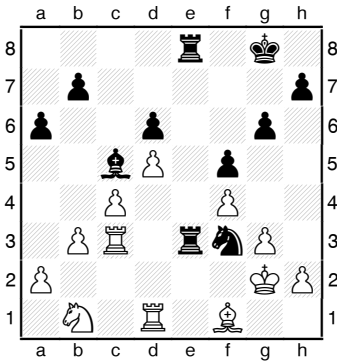
166



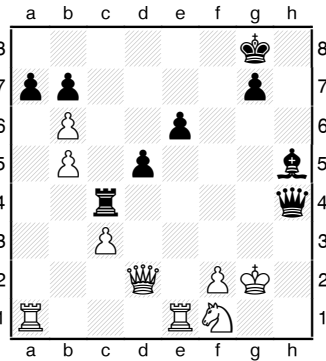
167



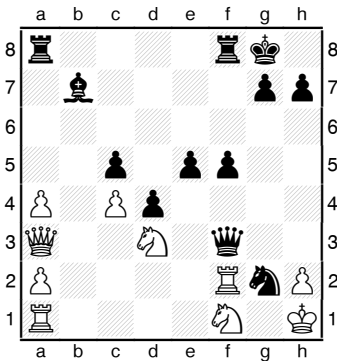
168



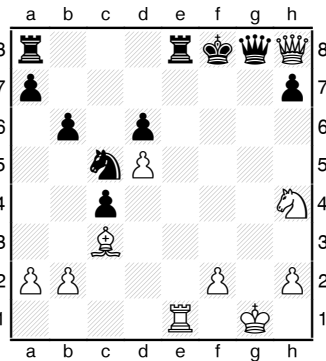
169



170



171

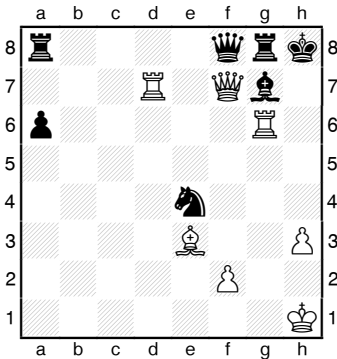


172

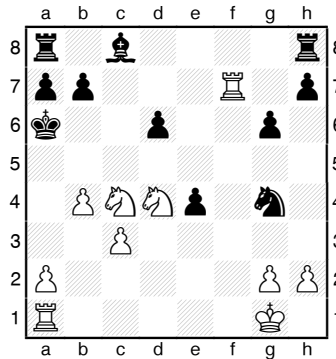
Matt in ? Zügen

In den folgenden Aufgaben wird Weiß zwar Matt, aber in wie viel Zügen? Das wird nicht verraten. Schließlich muss man in einer Turnierpartie selber darauf kommen, welche Mattmöglichkeiten es gibt. Manchmal sind übrigens auch mehrere Mattwege möglich, etwa in zwei oder drei Zügen. Zwar reicht es in der Praxis, einen sicheren Gewinnweg zu finden, doch im Training sollte man versuchen, alles zu finden.

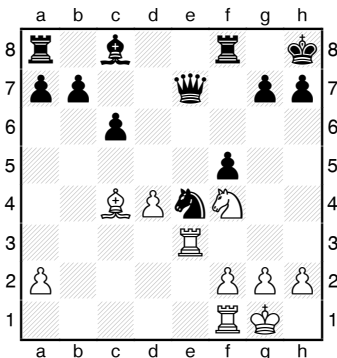
In allen Aufgaben ist **Weiß** am Zug



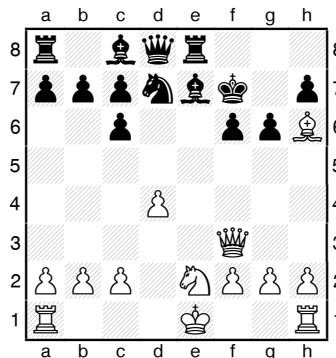
173



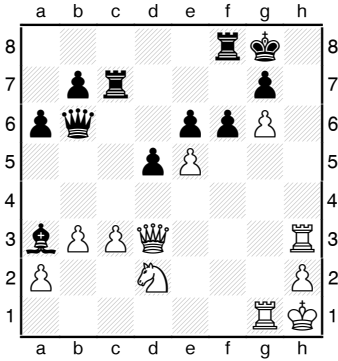
174



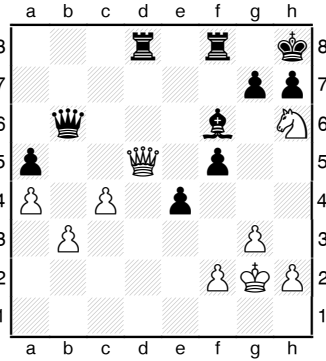
175



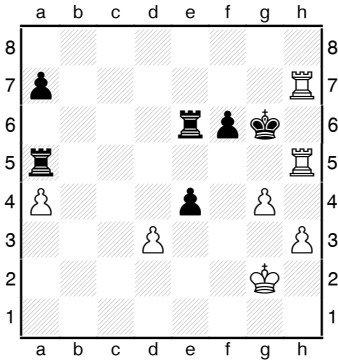
176



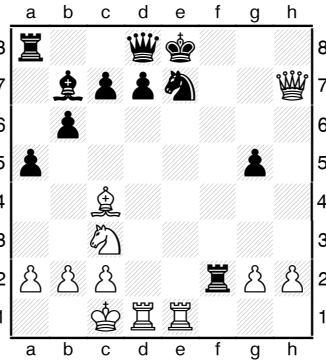
177



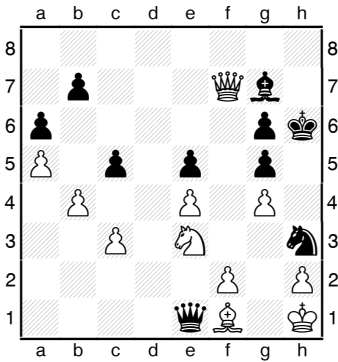
178



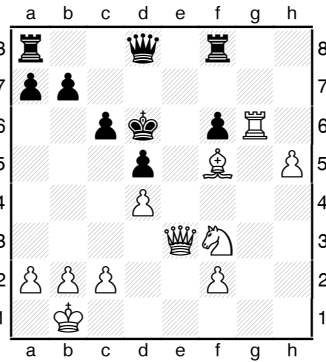
179



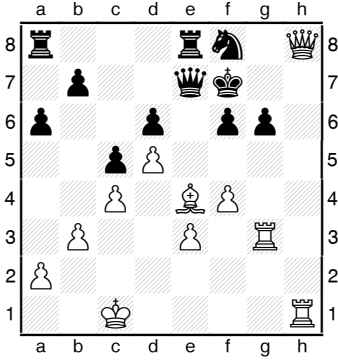
180



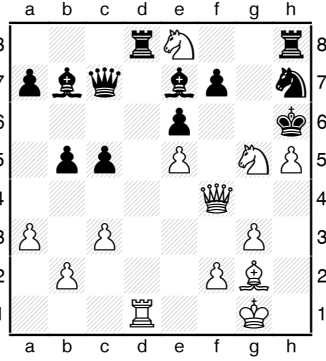
181



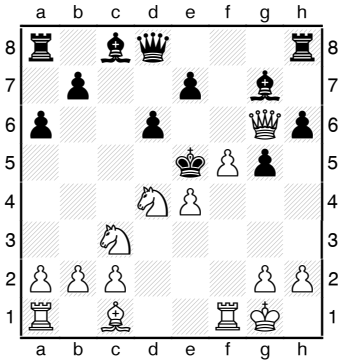
182



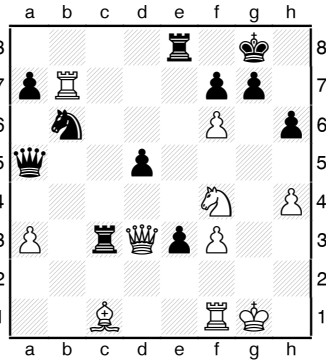
183



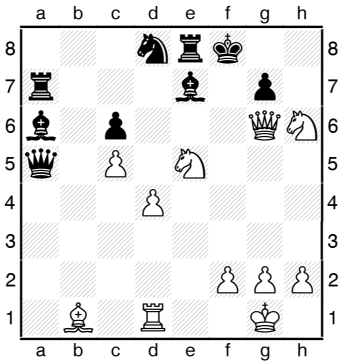
184



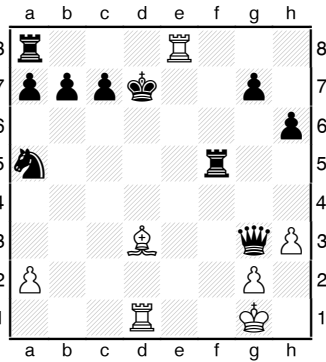
185



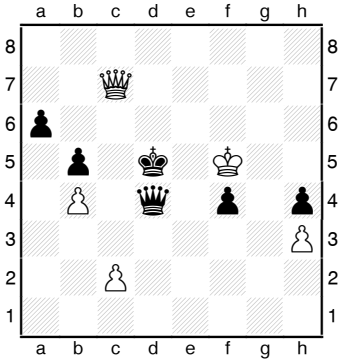
186



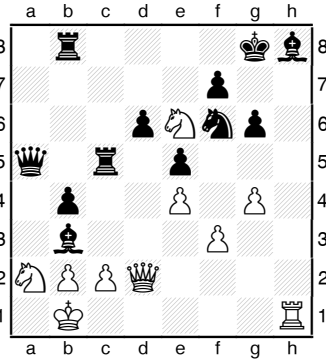
187



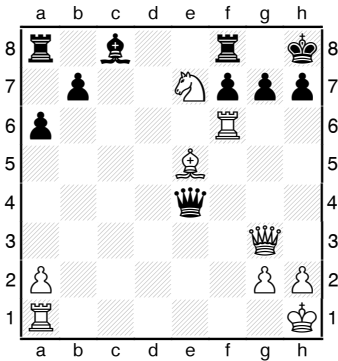
188



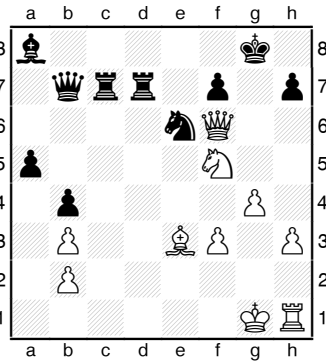
189



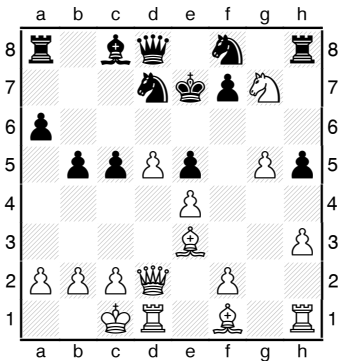
190



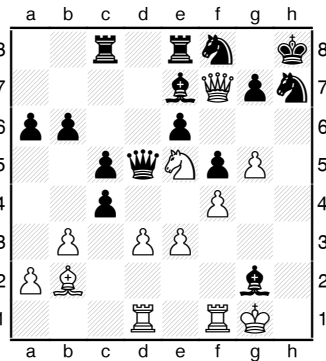
191



192



193

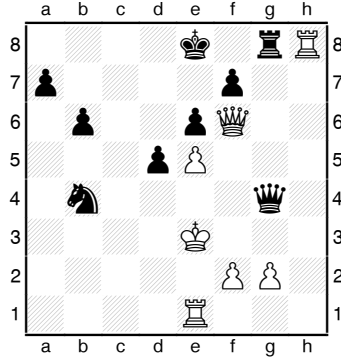


194

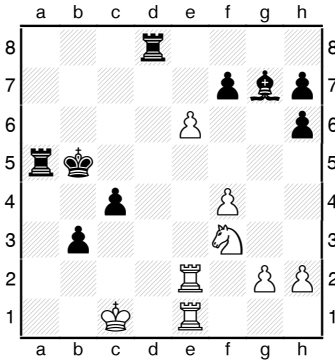
**Matt
in ? Zügen**



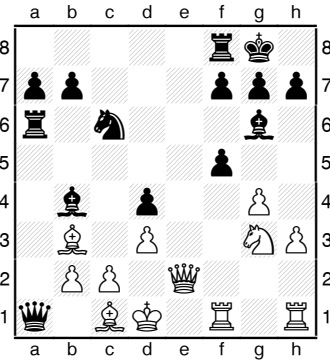
In allen Aufgaben ist
Schwarz am Zug



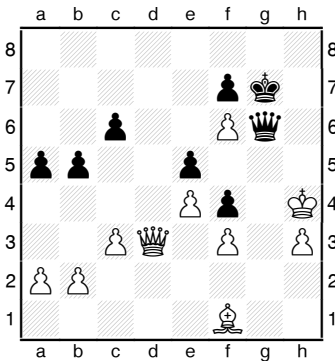
195



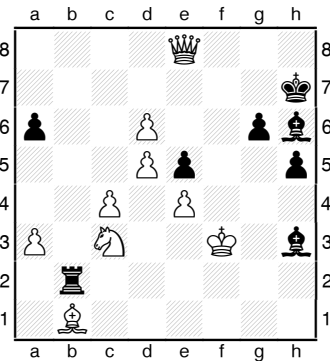
196



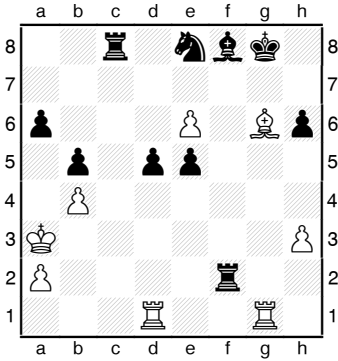
197



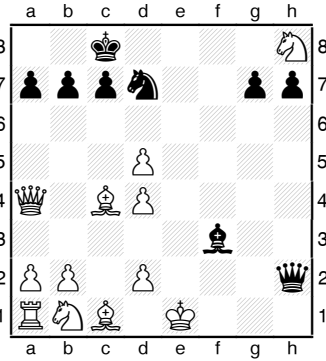
198



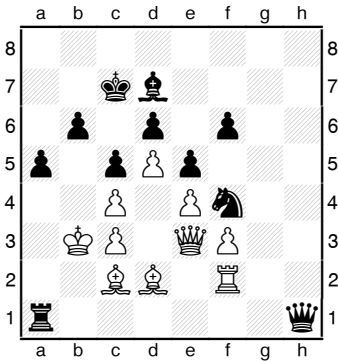
199



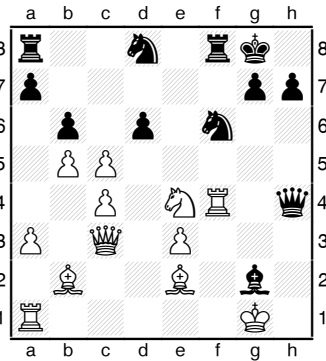
200



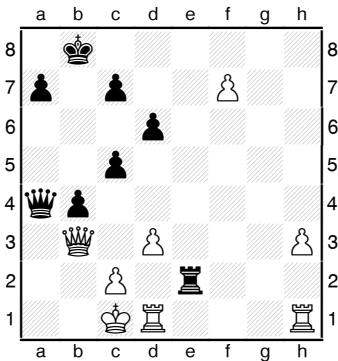
201



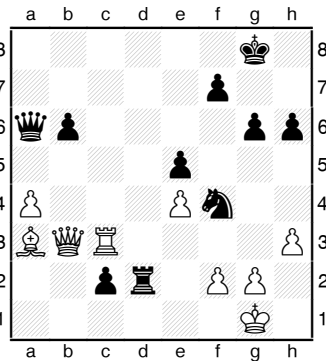
202



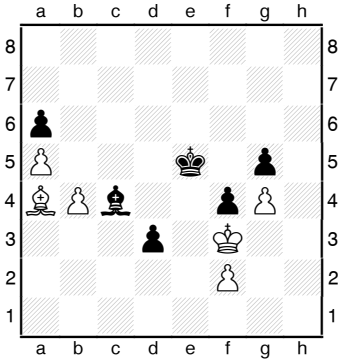
203



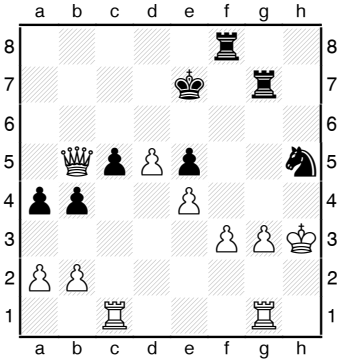
204



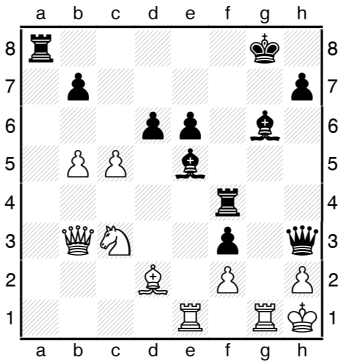
205



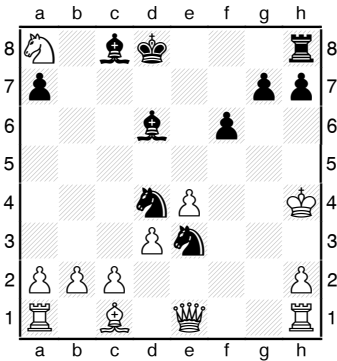
206



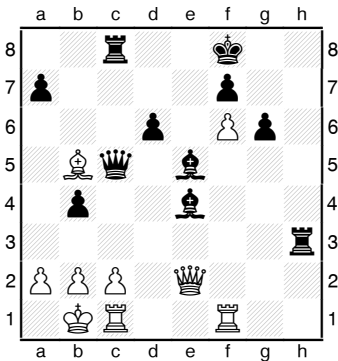
207



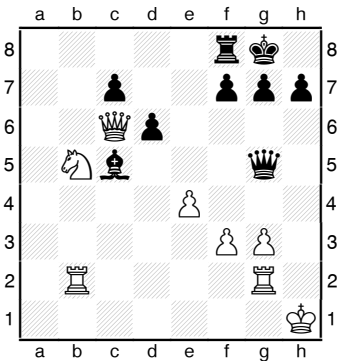
208



209



210

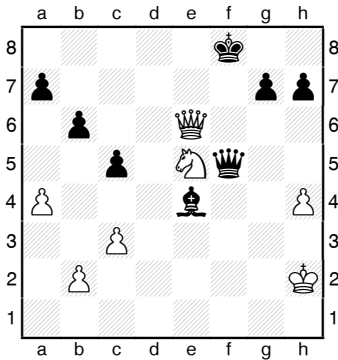


211

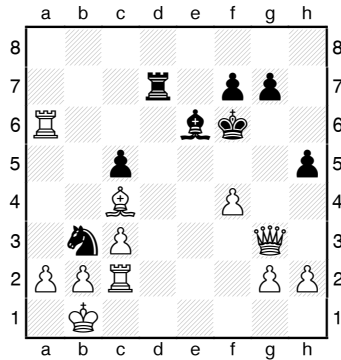
X setzt Matt in ? Zügen

Wer am Zug ist, wird diesmal auch nicht verraten! Vielleicht kann Weiß Matt setzen, oder aber Schwarz, oder sogar beide? Und natürlich kann es auch mehrere Mattmöglichkeiten geben, etwa ein Matt in 2 und eines in 3 Zügen.

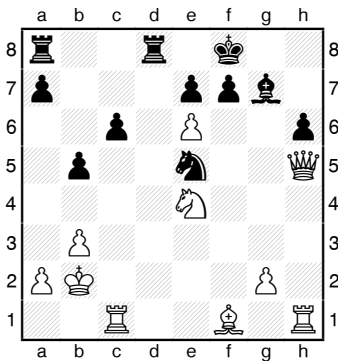
Da ist es gar nicht so leicht, alle Lösungen zu finden (vielleicht hat sogar der Autor einiges übersehen?) und es heißt, konzentriert bei der Sache zu bleiben, um soviel wie möglich zu finden!



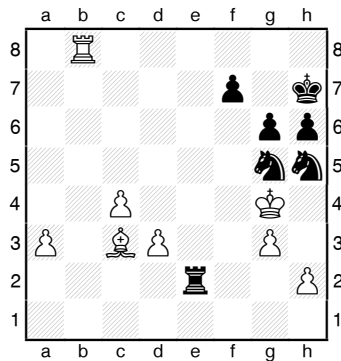
212



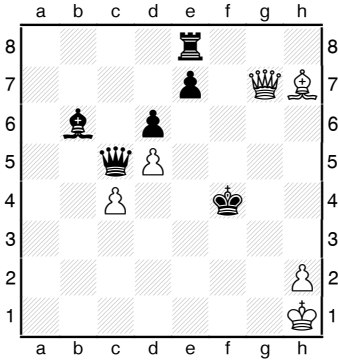
213



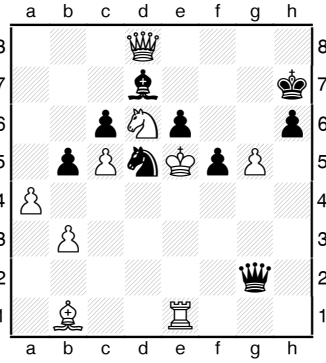
214



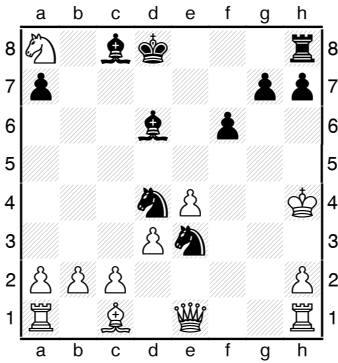
215



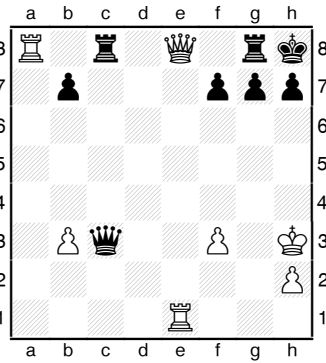
216



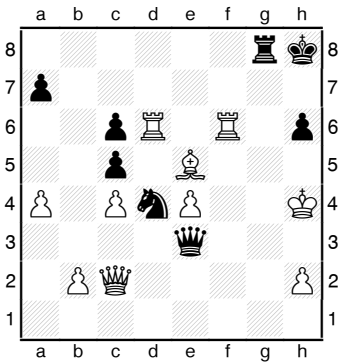
217



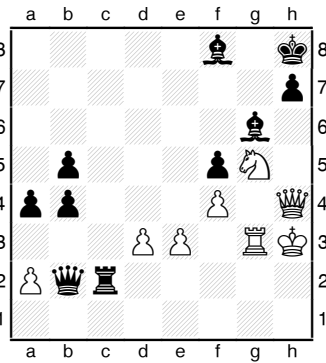
218



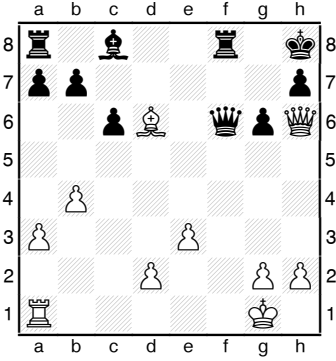
219



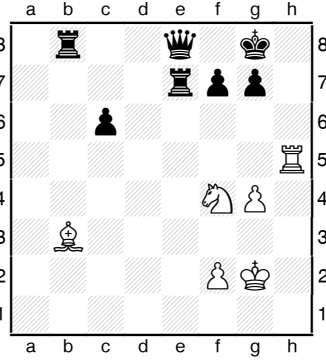
220



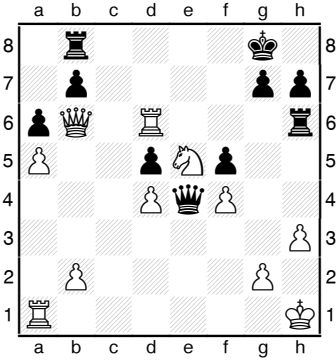
221



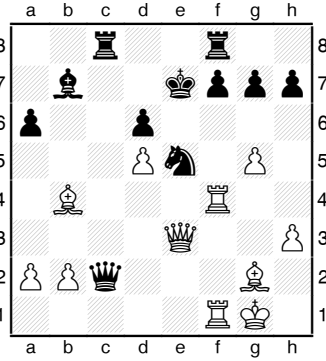
222



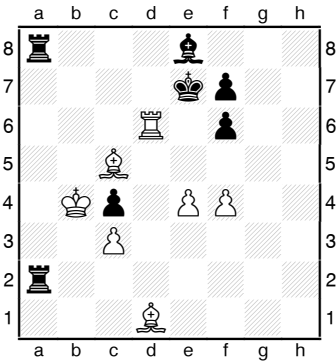
223



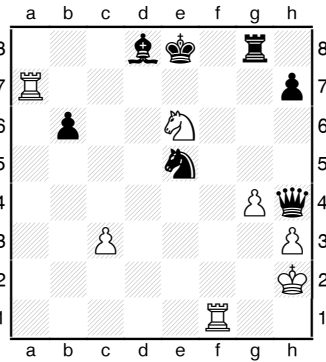
224



225



226



227

Lösungen

□ Matt in 1 Zug

- | | |
|---|--|
| <p>1 1.♖d4-h4#</p> <p>2 1.♘f4-g6#</p> <p>3 1.♘b5xa7#</p> <p>4 1.♖e1-e8#</p> <p>5 1.♘c5-d7#</p> <p>6 1.♙g3-e5#</p> <p>7 1.♖a7-f7#</p> <p>8 1.♚d2-d6</p> <p>9 1.♚d4-h8#</p> <p>10 1.c5-c6#</p> <p>11 1.h6-h7#</p> <p>12 1.♚f3-f6#</p> | <p>13 1.f7-f8♘# / 1.♘d7-f8#</p> <p>14 1.♙b1-e4#</p> <p>15 1.♘f5-h6#/-e7# / 1.♘g4-h6#</p> <p>16 1.♙e2-b5# (++)</p> <p>17 1.♖c1xc7# / 1.♘b5-a7#/-d6#</p> <p>18 1.♖b5-b8#</p> <p>19 1.♚f7-f4#</p> <p>20 1.♚h8-c8#</p> <p>21 1.♖f6-f8# (++)</p> <p>22 1.♚h6xh7# / -f8#</p> <p>23 1.♙a6-e2#
1.g3-g4+ ♚h5-h4 2.♘e5-g6#</p> |
|---|--|

■ Matt in 1 Zug

- | | |
|---|---|
| <p>24 1...♙f5-h3#</p> <p>25 1...♖a5-a1#</p> <p>26 1...♙a5-e1#</p> <p>27 1...♘e5-f3#</p> <p>28 1...♖a2-a3#</p> <p>29 1...♙e7-h4#</p> | <p>30 1...c5-c4#</p> <p>31 1...♘d4-f3#</p> <p>32 1...♖f3xf1# (++)</p> <p>33 1...♚g1-d1#</p> <p>34 1...♚e4-f3#/e3#</p> |
|---|---|

□ Matt in 2 Zügen

- 35 1.♖d7-d8+ ♜a8xd8 2.♖d1xd8#
- 36 1.♞g6-h7+ ♔g8-f7 2.♙c2-g6#
- 37 A: 1.♞f6-f7+ ♔g8-h8 2.♞f7xh7#
B: 1.♙g6-f7+ ♔g8-f8 2.♙f7-e6#
- 38 1.♙h4xf6+ ♙e7xf6 2.♞b8xf8#
- 39 1.♞b3xb7+ ♞c8-c7 2.♜f3-e5#
- 40 1.♞e2-e7+ ♔d8-c8 2.♞e7xe8#
- 41 1.f2-f3+ ♔g4-f5 2.e2-e4#
- 42 1.♖d4-g4+ ♔g8-h8 2.♞d6-f8#
- 43 1.♜f7-h6+ (++) ♔g8-h8 2.♞b3-g8#
[1...♔g8-f8 2.♞b3-f7#]
- 44 1.♞g8-h8+ ♔h6-g5 2.♞h8-h4#
- 45 1.♜h5-f6+ ♔e8-d8 2.♞f7-d7#
- 46 1.♙d3-h7 ♔g8xh7 2.g7-g8♞# [1...♔g8-f7 2.g7-g8♞#]
- 47 1.♖d1-d8+ ♔f8-e7 2.♞g3-d6#
[1...♞f7-e8 2.♞g3xg7#]
- 48 1.♞b8-h8+ ♔h6-g7 2.♙e7-f6#
- 49 1.♞h5-h8+ ♜f6-g8 2..♞e5-e8#
- 50 1.♖d8xf8+ ♔g8xf8 2.♖d1-d8#
- 51 1.♜e3-f5+ ♔g7-g8/f8 2.♞h2-h8#
[1...♔g7-g6 2.♞h2-h6#]
- 52 1.♞b8-g8+ ♔g7-h6 2.♙e5-f4#
- 53 A: 1.♜f6xh5+ (++) ♔g7-g8 2.♞c3-g7#
B: 1.♜f6-e8+ (++) ♔g7-g8 2.♞c3-g7#
- 54 1.g2-g3+ ♔h4-h3 2.♙e2-f1#
- 55 1.♜e6-g5+ ♔h7-g8 2.♞e5-h8#
[1...♙h6xg5 2.♞e5-g7#]

- 56 1. ♖h5-h6+ ♔g7-h8 2. ♗e5xg6#
- 57 1. ♖h4xh7+ ♔h8xh7 2. ♖f3-h3#
- 58 1. f3xg4+ ♔h5-h4 2. ♖e3-h6#
- 59 A: 1. ♖c3xh8+ ♗e7-g8 2. ♖h8-g7#
 B: 1. ♖c3-g7+ ♔f8xe8 2. ♖g7xh8
- 60 1. ♖h5xh7+ ♔h8xh7 2. ♖d5-h5#
- 61 1. ♗f6-d5+/g8+ (++) ♔e7-e8 2. ♖f3-f7#
- 62 1. ♖d5-g8+ ♖f8xg8 2. ♗h6-f7#
- 63 1. ♗h4xf6+ ♔e7xf6 2. ♖h7-h4#
- 64 1. ♖h6xf6+ ♖d8xf6 2. ♖e1-e8# [1...g7xf6 2. ♖h7-f7#]
- 65 1. ♖g8xh7+ ♖g7xh7 2. ♖c7xh7#
- 66 1. ♖c5-f8+ ♖e8xf8 2. ♖d8xf8#
- 67 1. ♗h3-e6+ ♖e7xe6 2. ♖f6-g7# [1...♖e7-f7 2. ♖f6-g7#]
- 68 1. ♖e6-c6+ b7xc6 2. ♗b5-a6#
- 69 1. ♖f5-h5+ ♔f7-f8 2. ♖f1xf6#
- 70 A: 1. ♖h1-d1+ ♔d4-c3 2. ♖g5-d2#
 B: 1. c2-c3+ ♔d4xc3 2. ♖g5-d2#
- 71 1. ♖c2xh7+ ♔h8xh7 2. ♖f3-h3#
- 72 1. ♖g5-h5+ g6xh5 2. ♖d6-h6#
- 73 1. ♗f4-g6+ h7xg6 2. ♖e4-h4#
- 74 1. ♖f1-f8+ ♖e7xf8 2. ♖h4-h7#
 [1...♔g8xf8 2. ♖h4-h8#]

■ Matt in 2 Zügen

- 75 1... ♗b7xf3+ 2. ♔h1-g1 ♗e7-c5#
- 76 1... ♖g1-h1+ 2. ♗c7-h2 ♖h1-f1#
- 77 1... ♖f2xf1+ 2. ♗f3-g1 ♗g4-f2#
- 78 1... ♖b6-g1+ 2. ♔h2-h3 ♖g1-h1#
- 79 1... ♖e5-e2+ 2. ♔d1-c1 ♖e2-c2#

- 80 1...♔h2-g1+ 2.♙c4-f1 ♖g1-g3#
- 81 1...♔h4-h1+ 2.♘g3xh1 ♕h6xh1#
- 82 1...♘f4-h3+ 2.♙g1-h1 ♖e2xh2#
- 83 1...♔e4-e3+ 2.♙g1-f1 ♕h3-h1#
- 84 **1...♖e2-e1+ 2.♙g1-f2 ♖e1-f1#** [2.♙g1-h2 ♖e1-h1#]
- 85 1...♘g6-f4+ 2.♙h3-h4 ♖g1-g4# / g7-g5#
- 86 1...♖h7-h1+ 2.♙g2xh1 ♕h8xh1# / ♖f3xh1#
- 87 1...♔d6-h6+ 2.♙h2-g2 ♖h6-h3#
- 88 1...♘e5-d3+ 2.♙e1-f1 ♖c5xf2#
- 89 1...♖b8-c8+ 2.♙c1-d2 ♖c8-c2#
- 90 1...♔a5xe1+ 2.♖e4xe1 ♖e5xe1#
- 91 1...♖h4-h2+ 2.♙g2-f1 ♕h2-f2#
- 92 1...♘e4-f2+ (++) 2.♙h1-g1 ♘f2-h3#
- 93 1...♘f3-e5+ 2.♙d3-d4 ♖e1-d2# / c7-c5#
- 94 1...♙b7-g2 2. -- ♖f8-f1#
- 95 1...♔c4xf1+ 2.♙g1xf1 ♖e4-e1#
- 96 1...♔g4-f4+ 2.♖f3xf4 e5xf4#
- 97 **1...♔h4-g3 2.h3xg4 ♔g3-h4#** [2. -- ♔g3-h2#]
- 98 1...♘d4-e2+ 2.♖e3/♖e1xe2 ♔a2-a1#
- 99 1...♙a6-f1+ 2.♖h1xf1 ♕d2-h2#
- 100 **1...♘e4-g3+ 2.h2xg3 ♖d5-h5#**
 [1...♘e4-f2+ 2.♙h1-g1
 (2.♖f1xf2?? ♖d5-d1+ 3.♖f2-f1 ♖d1xf1#)
 2...♘f2-h3+ 3.♙g1-h1 ♘h3-f2+ =]
- 101 1...♙e6-g4+ 2.h3xg4 [2.♖e1-e2] 2...♖b2-b1#
- 102 1...♘f4-e2+ 2.♙g1-h1 ♖d3xh3#
- 103 **1...♙f5-h3 2.♙g2xh3 / ♖c1-g1 ♘d3-f2#**
 [2.♖c3xd3 ♔g6xg2#]

■ Matt in 3 Zügen

- 104 1. ♖d7-h7+ ♔h8-g8 2. ♖b7-g7+ ♔g8-f8 3. ♖h7-h8#
- 105 1. ♕c5-e3+ ♔h6-h7 2. ♕g4-f5+ ♔h7-h8 3. ♕e3-d4#
- 106 1. ♔a5-b6+ ♔a8-b8 2. ♔b6-c6 ♔b8-c8 3. ♖a3-a8#
[2. ♖a3-c3 ♔b8-a8 3. ♖c3-c8#]
- 107 1. ♗h4-e7+ ♔f8-g8 2. ♗e7-e8+ ♖d8xe8 3. ♖e1xe8#
- 108 1. ♗f3-h5+ ♔h8-g8 2. ♗h5-h7+ ♔g8-f8 3. ♗h7-h8#
- 109 1. ♖h3xh6+ ♔h8-g7 2. ♗d2xg5+ ♔g7-f7 3. ♖h6-h7#
- 110 1. ♕d3-h7+ ♔g8-h8 2. ♕h7-g6+ ♔h8-g8 3. ♗h5-h7#
- 111 1. ♕g5-h6+ ♔g7-g8 2. ♖f2xf8+ ♖e8xf8 3. ♖f1xf8#
- 112 1. ♗g5-f6+ ♔h8-g8 2. ♕d2-h6 -- 3. ♗f6-g7#
- 113 1. ♗a3-f8+ ♔h6-h5 2. g2-g4+ ♔h5-h4 3. ♗f8-h6#
- 114 1. ♗h3-c8+ ♗g1-g8 2. ♗c8-c3+ ♗g8-g7+ 3. ♗c3xg7#
- 115 1. ♖d2-d8+ ♕b7-c8 2. ♕f1-a6 c7-c5 3. ♖d8xc8#
- 116 1. ♜f7-h6+ (++) ♔g8-h8 2. ♗d5-g8+ ♖e8xg8
3. ♜h6-f7# [1... ♔g8-f8 2. ♗d5-f7#/g8#]
- 117 1. ♗c7xf7+ ♖f8xf7 2. ♖d1-d8+ ♖f7-f8 3. ♖d1/ ♖f1xf8#
- 118 1. ♖h1xh7 ♔g8xh7 2. ♖d1-h1+ ♔h7-g8 3. ♖h1-h8#
- 119 1. ♗d3-d8+ ♔g8-h7 2. ♗d8-h4+ ♔h7-g8 3. ♖d1-d8#
- 120 1. ♖h1xh8+ ♔g8xh8 2. ♗d2-h6+ ♔h8-g8 3. ♗h6-g7#
- 121 1. ♖b1-h1+ ♔h6-g7 2. ♖h1-h7+ ♔g7-g8 3. ♜d5-e7#
- 122 1. ♜c6-e7+ ♔g8-h8 2. ♖h1xh7+ ♔h8xh7 3. ♗d1-h5#
- 123 1. ♕c2-e4 h6-h5 2. ♕e4-d5 h5-h4 3. ♖a8xg8#
- 124 1. ♖d2-d8+ ♗b6xd8 [1... ♕e7xd8 2. ♗h6-f8#]
2. ♖d1xd8+ ♕e7xd8 3. ♗h6-f8#
- 125 1. ♜d5-e7+ ♖e8xe7 2. ♖c1-c8+ ♖e7-e8 3. ♖c8xe8#
- 126 1. ♖b1-b5+ ♔f5-g4 2. ♖a6-a4+ ♔g4-h3 3. ♖b5-h5#
- 127 1. ♜g4-f6+ ♔g8-h8 2. h6xg7+ ♔h8xg7 3. ♖h2xh7#

- 128 1. ♖h5xh7+ ♔h8xh7 2. ♜f5-h5+ ♕f8-h6 3. ♜h5xh6#
- 129 1. ♜b2xb4+ a5xb4 2. ♖e1xb4+ ♔b8-a7 3. ♖b4-b7#
- 130 1. ♖g8-g6+ ♖d6xg6 2. ♜e1xe7+ ♔e8-d8 3. ♜b7-d7#
- 131 1. ♜h7-h8+ ♔f8-f7 2. ♜h1-h7+ ♔f7-g6 3. ♜f3-h4#
- 132 1. ♖c7-c2 a4-a3 2. ♔h3-g2 a3-a2 3. ♖c2-c1#
- 133 1. f5-f6+ ♜d7xf6/♖d4xf6 2. ♖g5-h6+ ♔g7-g8
3. ♖h6-h8#
- 134 1. ♜g2-b2+ ♔b6-a7 2. ♕g5-e3+ ♔a7-a8 3. ♜c3-c8#
- 135 1. ♜c2-c8+ ♕a3-f8 [1... ♔g8-h7 2.g5-g6#]
2.g5-g6 ♔g8-h8 3. ♜c8xf8#
- 136 1. ♖h6xf8+ ♔g8xf8 2. ♕g5-h6+ ♔f8-g8 3. ♜e1-e8#
- 137 1. b7-b8♞ (b7-b8♞? Patt!) 1... ♔a6-a7 2. ♜b8-d8
♔a7-a6 Zugzwang! 3. ♜d8-a8#
- 138 1. ♖a7-a8+ ♔c8-d7 2. ♖a8-c6+ ♔d7-e7 3. ♖c6-e6#
- 139 1. ♜d1-f1+ ♔f8-g8 2. ♔d7-e8 ♔g8-h8 3. ♜f1-f8#
- 140 1. ♖g4-e6+ ♔f7-f8 [1... ♔f7-e8 2. ♜h5-h8#]
2. ♜h5-h8+ ♜e7-g8 3. ♜h8xg8#
- 141 1. ♖a4xd7+ ♜d8xd7 2. ♜c7-c8+ ♜d7-d8 3. ♕d3-b5#
- 142 1. ♖h5-h8+ ♔f8-f7 2. ♕c2-g6+ ♔f7xg6 3. ♖h8-h5#
- 143 1. ♕f4-d6+ ♔e7-d8 2. ♜c7xe6+ (++) ♔d8-e8
3. ♜e6xg7# (++)
- 144 1. ♖g1-g6 f7xg6 2. ♜e5xg6+ h7xg6 3. ♜c3-h3#
- 145 1. ♜d6-f5+ < ♔f8-g8 2. ♖a3-f8+ ♔g8xf8 3. ♜d1-d8#
- 146 1. ♜g3xg7+ ♔g8-h8 2. ♜g7-g6+ (g5, g4, ... g1)
2... ♜f8-f6 3. ♕b2xf6#
- 147 1. ♖c5-f8+ ♔e8xf8 2. ♕f4-d6+ (++) ♔f8-e8 3. ♜f1-f8#
- 148 A: 1. ♜g6xh8+ ♜g7xh5 2. ♕c4-f7+ ♔e8-e7 3. ♕e3xc5#
B: 1. ♜g6xe5+ ♜g7xh5 2. ♕c4-f7+ ♔e8-e7 3. ♕e3xc5#
- 149 1. ♜f6xg6+ h7xg6 2. ♜d5-f6+ ♔g8-h8 3. ♖e7-h7#

■ Matt in 3 Zügen

- 150 1...♖d7-h3+ 2.♔h4xh3 ♘d5-f4+ 3.♔h3-h4 ♘e3-f5#
- 151 1...♖c1-g1+ 2.♔g2-h2 ♖g4-h4+ 3.♖g3-h3 ♗h4-f2#
- 152 1...♗e4xg2+ 2.♖g1xg2 ♖d2-d1+ 3.♖g2-g1 ♖d1xg1#
- 153 1...♗g4-f3+ 2.♖f1xf3 ♖d3xd1+ 3.♖f3-f1 ♖d1xf1#
- 154 1...♖c5-g5+ 2.♔g2-h3 ♖d1-g1 3. -- ♖g5-h5#
- 155 1...♙f6-e5 2.♙f3-g2 ♖h3xh2+ 3.♔h1-g1 ♖g8xg2#
- 156 1...♙e5xh2+ 2.♔g1-f2 ♙h2-g3+ 3.♔f2-f3 ♗h6-f4#
[2.♔g1-h1 ♙h2-g3+ 3.♔h1-g1 ♗h6-h2#]
- 157 1...♖e1-h1+ 2.♔h2xh1 ♗h7xh3+ 3.♔h1-g1 ♗h3xg2#
- 158 1...f2-f1♙ (1...f2-f2♗/♖? Patt!)
2.♙g1-h2 [2.♙g1-f2,e3,...] 2...♘d2-f3 3. -- ♙f1-g2#
- 159 1...♘e2-g3+ 2.♔f1-g1 ♗b5-f1+ 3.♖a1xf1 ♘g3-e2#
- 160 1...♙e3-g1+ 2.♔h2xg1 ♖f8-f1+ 3.♔g1-h2 ♖f1-h1#
[1...♘g3-f1+ 2.♔h2-h1 ♘f1-g3+ 3.♔h1-h2 =]
- 161 1...♖h8xh5+ 2.g4xh5 ♙b7-g2+ 3.♔h3-h4 ♙e5-g3#/f6#
- 162 1...♗f4xd2+ 2.♙e1xd2 e2-e1♗+ 3.♙d2xe1 ♖e8xe1#
- 163 1...♖f2-f1+ 2.♔g3-h2 ♖f1-h1+ 3.♔h2-g2 ♗e1-g1#
- 164 1...♔e3-f2+ 2.♗c4xb3 ♘f7-g5+ 3.h4xg5 ♗e5-h8#
- 165 1...♗c6-h1+ 2.♔g1xh1 ♙d1-f3+ 3.♔h1-g1 ♖d8-d1#
- 166 1...♘e5-f3+ 2.g2xf3 ♖f5-g5+ 3.♔g1-h1 ♗c4xf1#
- 167 1...♖h3xf3+ 2.♔f2xf3 [2.♘e1xf3 ♘c5xe4#]
2...♗h1-f1+ 3.♖g2-f2 ♗f1-h3#
- 168 1...♗b5xf1+ 2.♔g1xf1 ♘f5-g3+ (++) 3.♔f1-e1/g1
♖f6-f1#
- 169 1...♖e3-e2+ 2.♙f1xe2 ♖e8xe2+ 3.♔g2-f1 ♖e2-f2#
[2.♔g2xf3 ♖e2-f2#; 2.♔g2-h3 ♖e2xh2#]
[3.♔g2-h1 ♖e2xh2#; 3.♔g2xf3 ♖e2-f2#]

- 170 1...♙h5-f3+ 2.♔g2xf3 [2.♔g2-g1 ♖h4-h1#]
2...♗h4-g4+ 3.♕f3-e3 ♗g4-e4#
- 171 1...♘g2-f4+ 2.♖f2xf3 [2.♔h1-g1 ♘f4-h3# / ♗f3-h1#]
2...♙b7xf3+ 3.♔h1-g1 ♘f4-h3#
- 172 1.♘h4-g6+ h7xg6 2.♗h8-h6+ ♕f8-f7 3.♗h6-f4#
[2...♗g8-g7 3.♗h6xg7#]

□ setzt Matt in ? Zügen

- 173 1.♖g6-h6+ ♙g7xh6 2.♗f7-h7#
- 174 1.b4-b5#
- 175 1.♘f4-g6+ h7xg6 2.♖e3-h3+ ♗e7-h4 3.♖h3xh4#
- 176 1.♗f3-b3#
- 177 1.♖h3-h8+ ♔g8xh8 2.♗d3-h3+ ♔h8-g8 3.♗h3-h7#
- 178 1.♗d5-g8+ ♖f8xg8 2.♘h6-f7#
- 179 1.♖h5-h6+ ♔g6-g5 2.♔g2-g3 -- 3.h3-h4#
- 180 1.♗h7-g8+ ♖f2-f8 2.♙c4-f7#
- 181 1.♘e3-f5+ g6xf5 2.♗f7-h5# [1...♔h6-h7 2.♗f7xg7#]
- 182 1.♗e3-e5#
- 183 A: 1.♙e4xg6+ ♘f8xg6 2.♖h1-h7#
B: 1.♖h1-h7+ ♘f8xh7 2.♙e4xg6#
- 184 1.♘g5xf7+ (++) ♔h6xh5 2.♗f4-h6+
[2.g3-g4+ ♔h5-g6 (2...♔h5-h4 3.♗f4-g3#)
3.♘f7xh8#]
2...♔h5-g4 3.♗h6-h3#
- 185 1.♘d4-f3#
- 186 1.♗d3-g6 f7xg6 2.♖b7xg7+ ♔g8-h8/f8 3.♘f4xg6#
- 187 1.♗g6-f7+ ♘d8xf7 2.♘e5-g6#
- 188 1.♙d3-b5# (++)
- 189 1.c2-c4+ b5xc4 2.♗c7-d7# [1...♗d4xc4 2.♗c7-d7#]

- 190 1. ♖h1xh8+ ♔g8xh8 2. ♕d2-h6+ ♔h8-g8 3. ♕h6-g7#
 191 1. ♕g3xg7+ ♔h8xg7 2. ♖f6-g6# (++)
 192 1. ♘f5-h6+ ♔g8-f8 2. ♕f6-h8+ ♔f8-e7 3. ♘h6-f5#
 193 1. d5-d6#
 194 1. ♘e5-g6+ ♘f8xg6 2. ♙b2/♗f7xg7#

■ setzt Matt in ? Zügen

- 195 1... ♕g4-e4+ 2. ♔e3-d2 ♕e4-d3+ 3. ♔d2-c1 ♕d3-c2#
 196 1... ♖a5-a1#
 197 1... ♕a1xc1+ 2. ♔d1xc1 ♖a6-a1#
 198 1... ♔g7-h6 2. -- ♕g6-g5#
 199 1... ♙h3-g4+ 2. ♔f3-g3 ♙h6-f4+ 3. ♔g3-h4 ♖b2-h2#
 [3...g6-g5#]
 200 1... ♖c8-c3#
 201 1... ♕h2-g1+ 2. ♙c4-f1 ♕g1-g3#
 202 1... ♖a1-a3+ 2. ♔b3xa3 ♕h1-a1+ 3. ♔a3-b3 ♙d7-a4#
 [3...a5-a4#]
 203 1... ♕h4-h1+ 2. ♔g1-f2 ♘f6xe4#
 204 1... ♕a4-a1+ 2. ♕b3-b1 ♖e2xc2+ 3. ♔c1xc2 ♕a1-c3#
 205 1... ♕a6-f1+ 2. ♔g1xf1 ♖d2-d1# [2. ♔g1-h2 ♕f1xg2#]
 206 1... ♙c4-d5#
 207 1... ♘h5-f4+ 2. ♔h3-h4/h2 [2.g3xf4] 2... ♖f8-h8#
 208 1... ♕h3xh2+ 2. ♔h1xh2 ♖f4-h4# (++)
 209 1... ♖f2-f3+ 2.g2xf3 f5-f4# [2. ♔g3-h2 ♖f3-h3#]
 210 1... ♕c5-d4 2. -- ♕d4xb2#
 211 1... ♕g5-c1+ 2. ♔h1-h2 ♕c1-h6#
 [2. ♖g2-g1 ♕c1xg1#]

□ / ■ ? setzt Matt in ? Zügen

212 □ 1. ♗e5-d7#

■ 1... ♖f5-f2+ 2. ♔h2-h3 ♗f2-g2#

213 □ 1. ♖g3-g5#

■ 1... ♖d7-d1+ 2. ♖c2-c1 ♖d1xc1#

214 1... ♗e5-c4+ (++) 2. ♔b2-b1/c2 c4-a3#

215 □ 1. ♖b8-h8#

■ 1... f7-f5+ 2. ♔g4-h4 ♖e2xh2#

[2... ♗g5-f3+ 3. ♔h4-h3 ♖e2xh2#]

216 □ 1. ♖g7-g3#

217 □ 1... ♖g2-b2#

1... ♖g2-g3+ 2. ♔e5-d4 ♖g3-c3#;

1... ♖g2-h2+ 2. ♔e5-d4 ♖h2-d2+ 3. ♖b1-d3 ♖d2-c3#
(3. ♔d4-e5 ♖d2-c3#)

218 ■ 1... ♗d4-f3+ 2. ♔h4-h5 ♖c8-g4#

[1... ♗e3-g2 2. ♔h4-h5 g7-g6+ 3. ♔h5-h6 ♖d6-f8#;

1... g7-g5+ 2. ♔h4-h5 ♖c8-g4+ 3. ♔h5-h6 ♖d6-f8#]

219 □ 1. ♖e8xg8+ ♖c8xg8

[1... ♔h8xg8 2. ♖e1-e8+ ♖c8xe8 3. ♖a8xe8#]

2. ♖a8xg8+ ♔h8xg8 3. ♖e1-e8#

■ 1... ♖c3xf3+ 2. ♔h3-h4 g7-g5#

220 □ 1. ♖f6xh6# (++)

■ 1... ♖e3-g5+ 2. ♔h4-h3 ♖g5-g4#

221 □ 1. ♖h4xh7+ ♖g6xh7 2. ♗g5-f7#

■ 1... ♖c2-h2#

- 222** □ 1.♔d6-e5 ♖f6xe5? 2.♗h6xf8#
 aber 1...♔c8-f5 2.♔e5xf6+ ♜f8xf6 ...
 ■ 1...♗f6-f2+ 2.♔g1-h1 ♗f2-f1+ 3.♞a1xf1 ♜f8xf1#
- 223** □ 1.♘f4-g6 ♞b8xb3 [--] 2.♞h5-h8#
- 224** □ 1.♞d6/♗b6-d8+ ♞b8xd8 2.♗b6xd8#
 ■ 1...♞h6xh3+ 2.♔h1-g1 ♗e4-e3+ 3.♔g1-f1
 ♞h3-h1#
- 225** □ 1.♗e3xe5+ ♔e7-d8 2.♗e5xd6+ ♔d8-e8
 3.♗d6-e7#
- 226** □ 1.♞d6-d5+ ♔e7-e6 2.f4-f5#
 ■ 1...♞a2-a4+ [1...♞a8-a4+] 2.♔d1xa4 ♞a8xa4#
- 227** □ 1.♞f1-f8+ ♞g8xf8 2.♘e6-g7#

Wem unser Taktiktraining gefallen hat, der kann in weiteren Broschüren die nächsten Schritte angehen.

Die logische Folge ist, sich mit Kombinationen zu beschäftigen, in denen Matt droht, aber nicht zwingend erfolgt, weil sich die angegriffene Partei durch Materialverlust aus der Klemme befreien kann. Das kommt in der Spielpraxis übrigens viel häufiger vor als die hier gezeigten zwingenden Mattstellungen.

Danach sollte man sich mit dem häufigsten Fall befassen. Dies sind Kombinationen, die mehr oder weniger Material gewinnen, vom kleinen Bauern bis zur Dame, mit Doppelangriff und Gabeln, Fesselung, Abzug, Hin- und Weglenkung und viele andere Motive mehr.

Je mehr man über die Taktik im Schachspiel weiß, desto interessanter ist es - und desto erfolgreicher ist das eigene Spiel!